

First Floor Plan with Electrical Notations

scale: 1/4" = 1'-0" (1:48)
 2,304 gross sf, minus 19 sf of elevator shaft = 2,285 sf
 exterior porch = 2,206 sf

- Electrical Legend**
- 120v receptacle
 - 240v receptacle
 - smoke detector & alarm
 - light fixture
 - recessed light fixture
 - light switch
 - exhaust fan
 - waterproof
 - wp
 - ground fault circuit interrupted
 - mounted 42" (1.0m) above the floor
 - 42"
 - category 5 network cabling
 - phone line
 - coaxial cable
 - carbon monoxide alarm, hard wired with supplemental power

101
 HONEY 101
 101 (101) 101 (101)

Notes

1. See electrical schedule for all electrical symbols.
2. All electrical work shall be in accordance with the National Electrical Code (NEC) and all applicable local codes.
3. All electrical work shall be done in accordance with the manufacturer's instructions.
4. All electrical work shall be done in accordance with the applicable building codes.
5. All electrical work shall be done in accordance with the applicable fire codes.
6. All electrical work shall be done in accordance with the applicable safety codes.
7. All electrical work shall be done in accordance with the applicable health codes.
8. All electrical work shall be done in accordance with the applicable environmental codes.
9. All electrical work shall be done in accordance with the applicable accessibility codes.
10. All electrical work shall be done in accordance with the applicable energy codes.
11. All electrical work shall be done in accordance with the applicable sustainability codes.
12. All electrical work shall be done in accordance with the applicable green building codes.
13. All electrical work shall be done in accordance with the applicable smart building codes.
14. All electrical work shall be done in accordance with the applicable security codes.
15. All electrical work shall be done in accordance with the applicable privacy codes.
16. All electrical work shall be done in accordance with the applicable data protection codes.
17. All electrical work shall be done in accordance with the applicable information security codes.
18. All electrical work shall be done in accordance with the applicable business continuity codes.
19. All electrical work shall be done in accordance with the applicable disaster recovery codes.
20. All electrical work shall be done in accordance with the applicable business resilience codes.

Architectural Notes

1. See architectural schedule for all architectural symbols.
2. All architectural work shall be in accordance with the applicable building codes.
3. All architectural work shall be done in accordance with the applicable fire codes.
4. All architectural work shall be done in accordance with the applicable safety codes.
5. All architectural work shall be done in accordance with the applicable health codes.
6. All architectural work shall be done in accordance with the applicable environmental codes.
7. All architectural work shall be done in accordance with the applicable accessibility codes.
8. All architectural work shall be done in accordance with the applicable energy codes.
9. All architectural work shall be done in accordance with the applicable sustainability codes.
10. All architectural work shall be done in accordance with the applicable green building codes.
11. All architectural work shall be done in accordance with the applicable smart building codes.
12. All architectural work shall be done in accordance with the applicable security codes.
13. All architectural work shall be done in accordance with the applicable privacy codes.
14. All architectural work shall be done in accordance with the applicable data protection codes.
15. All architectural work shall be done in accordance with the applicable information security codes.
16. All architectural work shall be done in accordance with the applicable business continuity codes.
17. All architectural work shall be done in accordance with the applicable disaster recovery codes.
18. All architectural work shall be done in accordance with the applicable business resilience codes.

Copyright

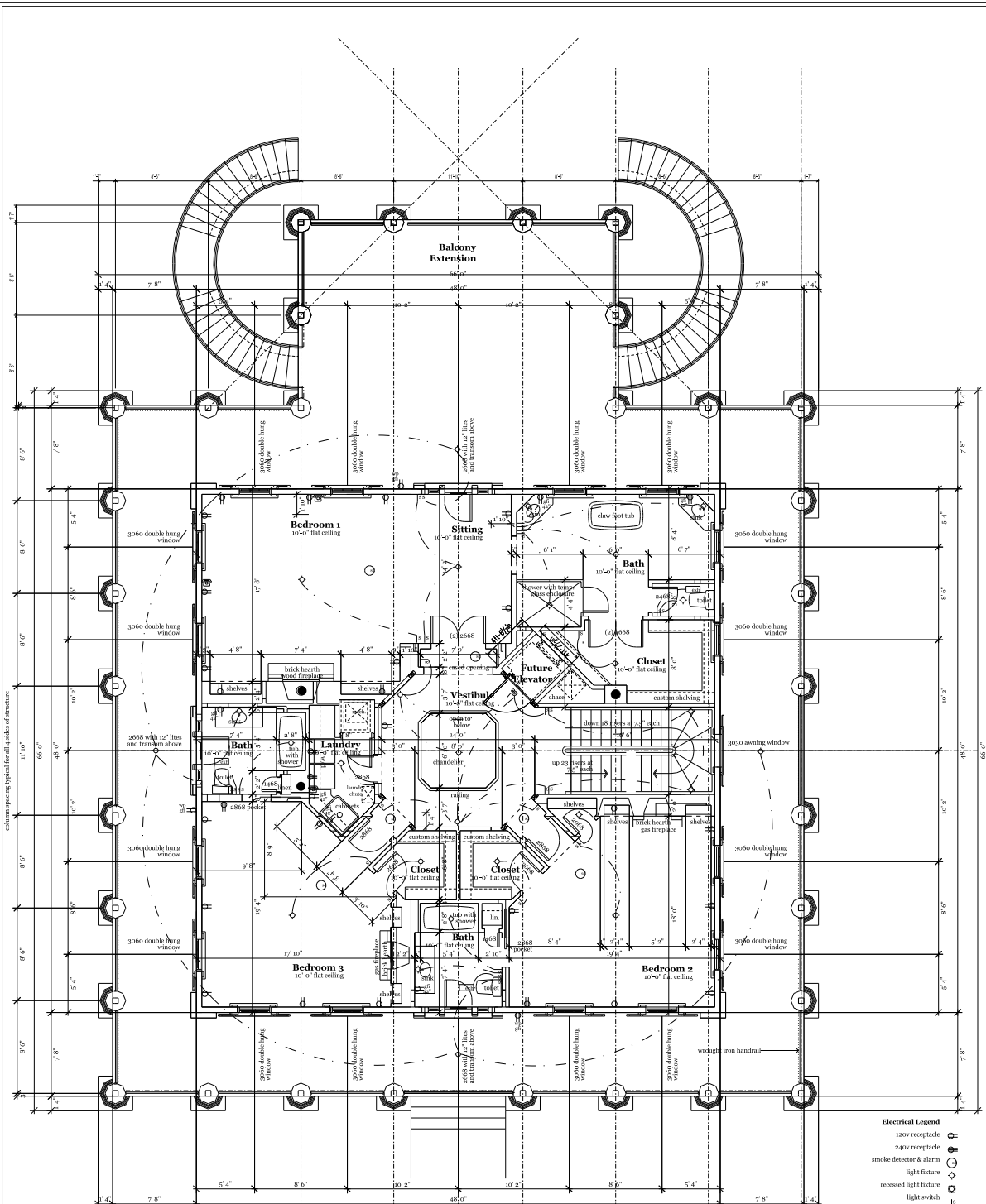
© 2017 Anderson Architects, Inc. All rights reserved. No part of this document may be reproduced without the written permission of Anderson Architects, Inc.

Anderson Architects
 101 (101) 101 (101)
 101 (101) 101 (101)

Tyree house plans
 ORIGINAL DESIGN

ANDERSON ARCHITECTS
 REVISED DESIGN

DESIGNS HAVE BEEN MADE TO DRAWINGS BY OTHERS.
 REFER TO ORIGINAL DRAWINGS TO VERIFY ALL INFORMATION AND TO OBTAIN THE ORIGINAL.
 NO GUARANTEE IS MADE BY THE ARCHITECT AS TO THE COMPLETENESS OR ACCURACY OF ORIGINAL DESIGN.
 NO GUARANTEE IS MADE BY THE ARCHITECT AS TO THE COMPLETENESS OR ACCURACY OF ORIGINAL DESIGN.



Second Floor Plan with Electrical Notations

scale: 1/4" = 1'-0" (1:48)
 2,304 gross sf, minus 19 sf of elevator shaft and 455 sf of rotunda opening = 1,830 sf
 exterior balcony = 2,206 sf

- Electrical Legend**
- 120v receptacle
 - 240v receptacle
 - smoke detector & alarm
 - light fixture
 - recessed light fixture
 - light switch
 - exhaust fan
 - waterproof
 - ground fault circuit interrupted
 - mounted 42" (1.0m) above the floor
 - category 5 network cabling
 - phone line
 - coaxial cable
 - carbon monoxide alarm, hard wired with supplemental power

02
 SHEET # 140
 810252017 1216131 PM

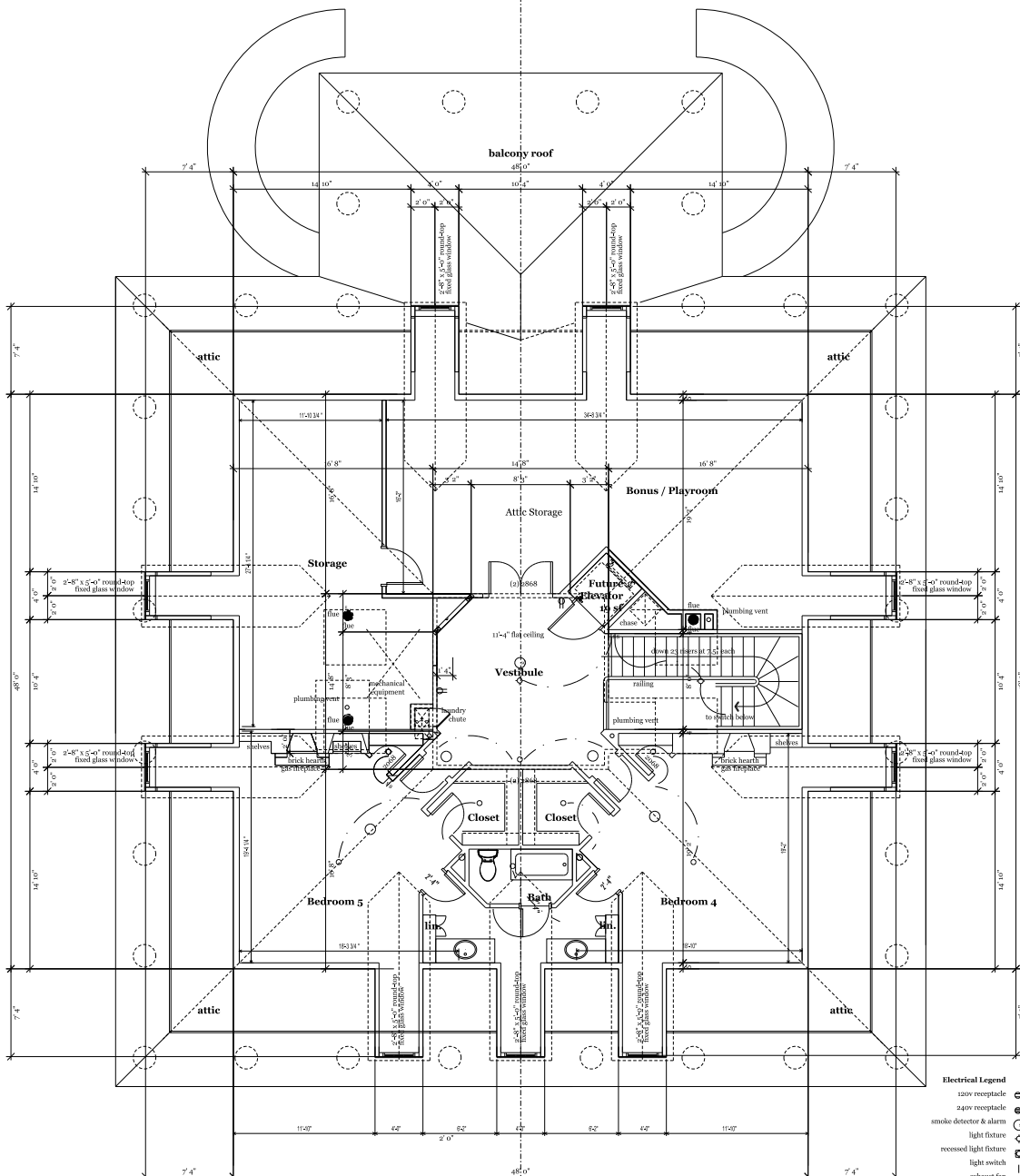
Anderson Architects
 1000 15th Street, Suite 1000
 Denver, CO 80202
 Phone: 303.733.1000
 Fax: 303.733.1001
 www.andersonarchitects.com

Architects
 01 Anderson Architects
 02 Anderson Architects
 03 Anderson Architects
 04 Anderson Architects
 05 Anderson Architects
 06 Anderson Architects
 07 Anderson Architects
 08 Anderson Architects
 09 Anderson Architects
 10 Anderson Architects
 11 Anderson Architects
 12 Anderson Architects
 13 Anderson Architects
 14 Anderson Architects
 15 Anderson Architects
 16 Anderson Architects
 17 Anderson Architects
 18 Anderson Architects
 19 Anderson Architects
 20 Anderson Architects
 21 Anderson Architects
 22 Anderson Architects
 23 Anderson Architects
 24 Anderson Architects
 25 Anderson Architects
 26 Anderson Architects
 27 Anderson Architects
 28 Anderson Architects
 29 Anderson Architects
 30 Anderson Architects
 31 Anderson Architects
 32 Anderson Architects
 33 Anderson Architects
 34 Anderson Architects
 35 Anderson Architects
 36 Anderson Architects
 37 Anderson Architects
 38 Anderson Architects
 39 Anderson Architects
 40 Anderson Architects
 41 Anderson Architects
 42 Anderson Architects
 43 Anderson Architects
 44 Anderson Architects
 45 Anderson Architects
 46 Anderson Architects
 47 Anderson Architects
 48 Anderson Architects
 49 Anderson Architects
 50 Anderson Architects
 51 Anderson Architects
 52 Anderson Architects
 53 Anderson Architects
 54 Anderson Architects
 55 Anderson Architects
 56 Anderson Architects
 57 Anderson Architects
 58 Anderson Architects
 59 Anderson Architects
 60 Anderson Architects
 61 Anderson Architects
 62 Anderson Architects
 63 Anderson Architects
 64 Anderson Architects
 65 Anderson Architects
 66 Anderson Architects
 67 Anderson Architects
 68 Anderson Architects
 69 Anderson Architects
 70 Anderson Architects
 71 Anderson Architects
 72 Anderson Architects
 73 Anderson Architects
 74 Anderson Architects
 75 Anderson Architects
 76 Anderson Architects
 77 Anderson Architects
 78 Anderson Architects
 79 Anderson Architects
 80 Anderson Architects
 81 Anderson Architects
 82 Anderson Architects
 83 Anderson Architects
 84 Anderson Architects
 85 Anderson Architects
 86 Anderson Architects
 87 Anderson Architects
 88 Anderson Architects
 89 Anderson Architects
 90 Anderson Architects
 91 Anderson Architects
 92 Anderson Architects
 93 Anderson Architects
 94 Anderson Architects
 95 Anderson Architects
 96 Anderson Architects
 97 Anderson Architects
 98 Anderson Architects
 99 Anderson Architects
 100 Anderson Architects

Tyree house plans
 ORIGINAL DESIGN
 Twelve Ooms

ANDERSON ARCHITECTS
 REVISED DESIGN

DESIGNS HAVE BEEN MADE TO DRAWINGS BY OTHERS.
 REFER TO ORIGINAL DRAWINGS TO VERIFY THE ACCURACY OF THE DESIGN.
 THE ARCHITECTS SHALL NOT BE RESPONSIBLE FOR THE ACCURACY OF THE ORIGINAL
 DESIGN OR THE ACCURACY OF THE ORIGINAL DESIGN.
 NO COPYRIGHT OR TRADEMARK IS CLAIMED BY THE ARCHITECTS FOR THE ORIGINAL DESIGN.



Attic Plan with Electrical Notations
 scale: 1/4" = 1'-0" (1:48)
 2,568 gross sf, minus 19 sf of elevator shaft = 2,549 sf

- Electrical Legend**
- 120v receptacle
 - 240v receptacle
 - smoke detector & alarm
 - light fixture
 - recessed light fixture
 - light switch
 - exhaust fan
 - waterproof
 - ground fault circuit interrupted
 - mounted 42" (1.0m) above the floor
 - category 3 network cabling
 - phone line
 - coaxial cable
 - carbon monoxide alarm, hard wired with supplemental power

03
 ATTIC PLAN
 8/15/2017 12:17:11 PM
 ANDERSON ARCHITECTS

Notes

- 01 - See floor plan
- 02 - See floor plan
- 03 - See floor plan
- 04 - See floor plan
- 05 - See floor plan
- 06 - See floor plan
- 07 - See floor plan
- 08 - See floor plan
- 09 - See floor plan
- 10 - See floor plan

Area Calculations

Attic: 2,568 sq ft
 Elevator Shaft: 19 sq ft
 Total: 2,549 sq ft

Disclaimer

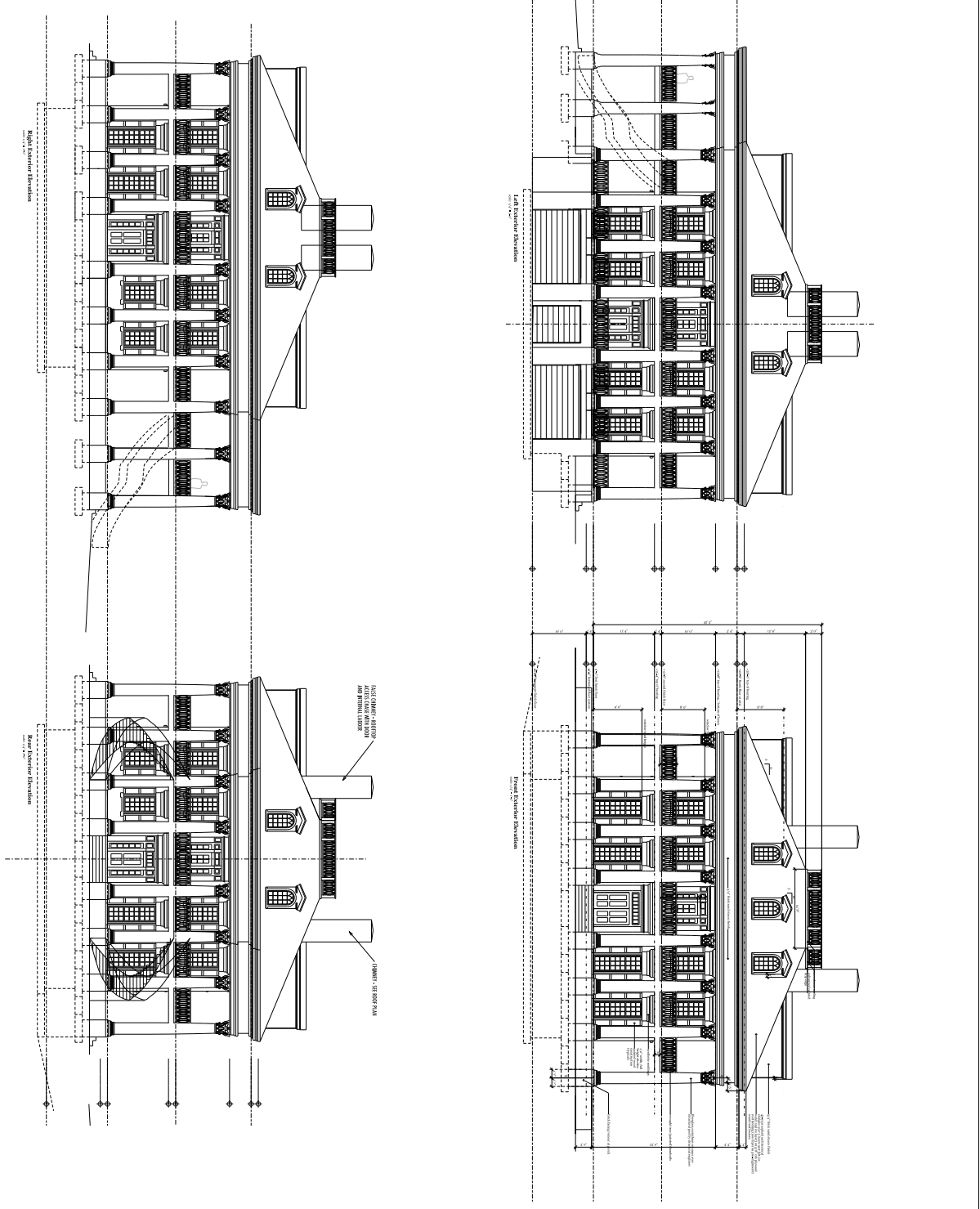
This document is the property of Anderson Architects and is not to be distributed, copied, or used in any way without the written consent of Anderson Architects. Anderson Architects is not responsible for any errors or omissions in this document.

Anderson Architects
 1234 Main Street
 Suite 500
 San Francisco, CA 94102
 (415) 555-1234
 andersonarchitects.com

Tyree house plans
 ORIGINAL DESIGN
 Twelve OAKS

ANDERSON ARCHITECTS
 REVISED DESIGN

DESIGNS HAVE BEEN MADE TO DRAWINGS BY OTHERS.
 REFER TO ORIGINAL DRAWINGS TO VERIFY THE ACCURACY OF THE DESIGN.
 NO GUARANTEE IS MADE FOR THE ACCURACY OF THE ORIGINAL DESIGN.
 NO GUARANTEE IS MADE FOR THE ACCURACY OF THE ORIGINAL DESIGN.



ANDERSON ARCHITECTS
REVISED DESIGN

REVISIONS HAVE BEEN MADE TO DRAWINGS BY OTHERS.
REFER TO ORIGINAL DRAWINGS TO VERIFY ALL DIMENSIONS AND THE ACCURACY OF THE ORIGINAL.
CONSTRUCTION OF THIS DRAWING IS THE SOLE RESPONSIBILITY OF THE ARCHITECT.
NO GUARANTEE IS MADE BY THE ARCHITECT AS TO THE COMPLETENESS OR ACCURACY OF ORIGINAL DESIGN.

Tyree
house plans
ORIGINAL DESIGN

Twelve
OOMS

1200 Tyree House
0418 3/24/2018
tyreehouseplans.com

1200 Tyree House
0418 3/24/2018
tyreehouseplans.com

1200 Tyree House
0418 3/24/2018
tyreehouseplans.com

1200 Tyree House
0418 3/24/2018
tyreehouseplans.com

1200 Tyree House
0418 3/24/2018
tyreehouseplans.com

1200 Tyree House
0418 3/24/2018
tyreehouseplans.com

1200 Tyree House
0418 3/24/2018
tyreehouseplans.com

1200 Tyree House
0418 3/24/2018
tyreehouseplans.com

1200 Tyree House
0418 3/24/2018
tyreehouseplans.com

1200 Tyree House
0418 3/24/2018
tyreehouseplans.com

1200 Tyree House
0418 3/24/2018
tyreehouseplans.com

1200 Tyree House
0418 3/24/2018
tyreehouseplans.com

1200 Tyree House
0418 3/24/2018
tyreehouseplans.com

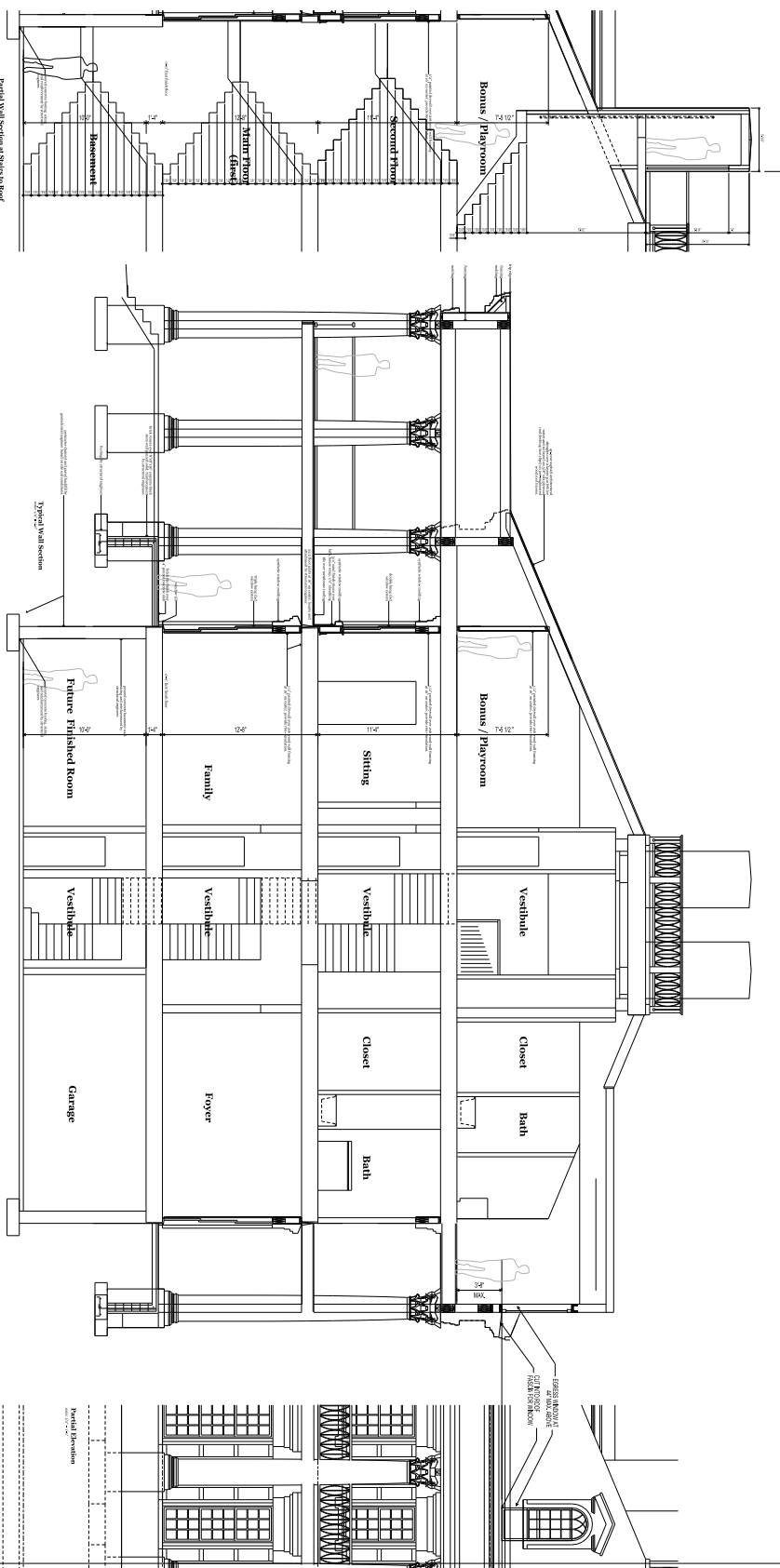
1200 Tyree House
0418 3/24/2018
tyreehouseplans.com

1200 Tyree House
0418 3/24/2018
tyreehouseplans.com

1200 Tyree House
0418 3/24/2018
tyreehouseplans.com

1200 Tyree House
0418 3/24/2018
tyreehouseplans.com

04
1200 Tyree House
0418 3/24/2018
tyreehouseplans.com



ANDERSON ARCHITECTS
REVISED DESIGN

DESIGNERS HAVE BEEN ABLE TO DRAW UP BY OTHERS.
REFER TO ORIGINAL WORKS TO DETERMINE THE ACCURACY OF THE ORIGINAL.
DESIGNERS OR CONSULTANTS TO BE RESPONSIBLE FOR THE COMPLETION OR ACCURACY OF ORIGINAL DESIGN.
NO COPYRIGHT OR TRADE MARK IS CLAIMED BY THE ARCHITECTS.

Tyree
house plans
ORIGINAL DESIGN

Twelve
OAKS

©2013 Tyree House Plans
www.tyreehouseplans.com

Disclaimer: These plans are provided as a guide only. They are not intended to be used as a final construction document. The architect is not responsible for any errors or omissions in these plans. The user of these plans is advised to consult with a professional engineer or architect before construction.

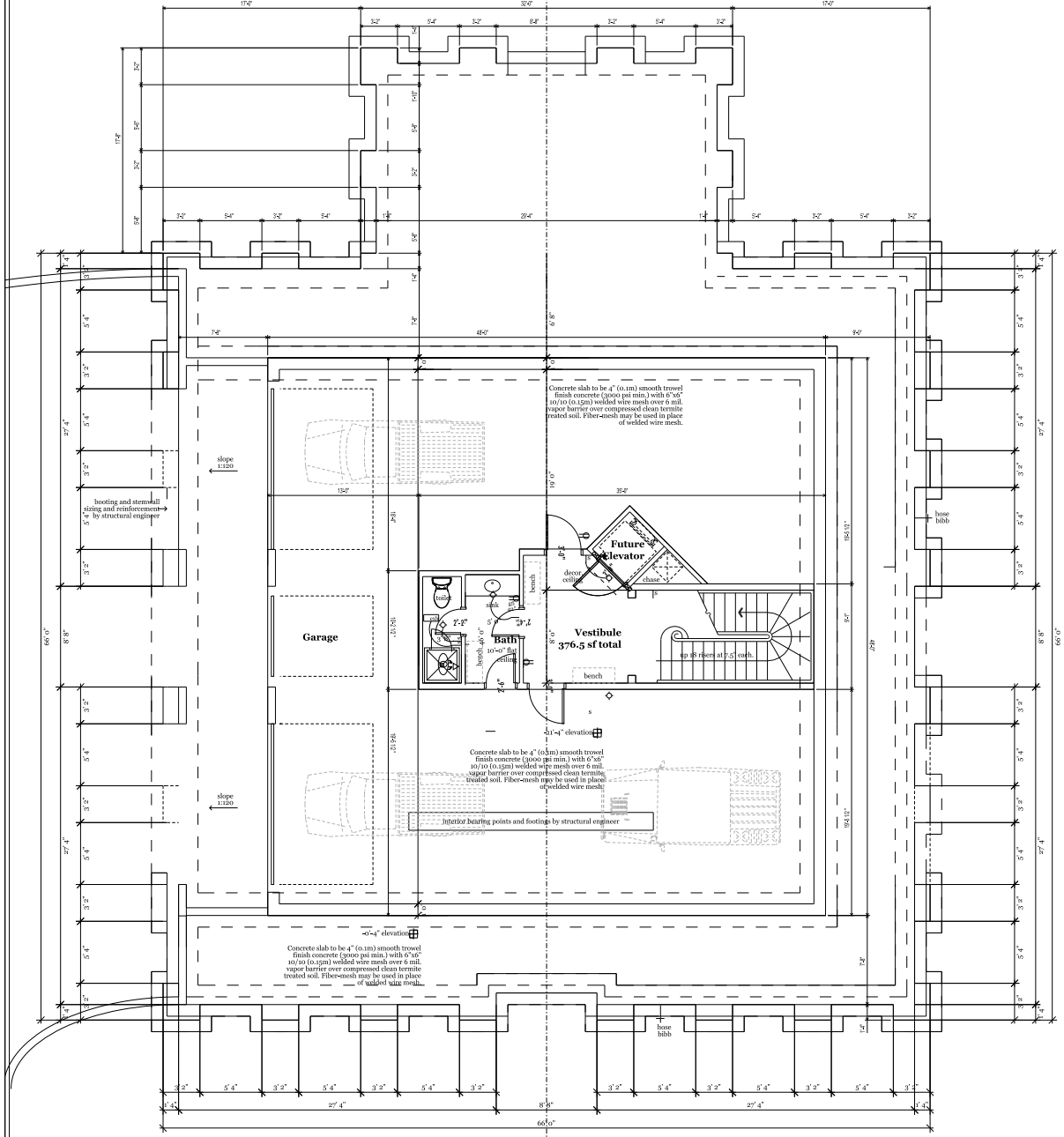
Notes: 1. All dimensions are in feet and inches. 2. All materials are to be of standard quality unless otherwise specified. 3. All work is to be in accordance with the latest editions of the International Building Code and the International Residential Code. 4. The architect is not responsible for any errors or omissions in these plans. The user of these plans is advised to consult with a professional engineer or architect before construction.

Architect's Statement: I, the undersigned, hereby certify that I am a duly licensed architect in the State of Texas, and that I am the author of the above-mentioned plans. I am not aware of any other persons who have been or may be engaged in the preparation of these plans.

05

PROJECT # 1411
REVISED 10/15/13

10/15/13 8:17:23 AM 7/12/1905 PM



Foundation and Basement Plan
 2,304 sf gross
 376.5 sf net Vestibule, Stair and Elevator
 1,927.5 sf net Garage

06
 SHEET # 101
 OF 100 (10/15/19)

- 01 - foundation
- 02 - footings
- 03 - exterior walls
- 04 - interior walls
- 05 - exterior doors
- 06 - interior doors
- 07 - windows
- 08 - stairs
- 09 - elevators
- 10 - mechanical
- 11 - electrical
- 12 - plumbing
- 13 - fire
- 14 - landscape
- 15 - site
- 16 - other

Notes:
 1. All dimensions are in feet and inches unless otherwise noted.
 2. All walls are to be finished on the interior.
 3. All exterior walls are to be finished on the exterior.
 4. All interior walls are to be finished on both sides.
 5. All doors are to be finished on both sides.
 6. All windows are to be finished on both sides.
 7. All stairs are to be finished on both sides.
 8. All elevators are to be finished on both sides.
 9. All mechanical, electrical, plumbing, and fire equipment are to be installed in accordance with the applicable codes and standards.
 10. All site work is to be completed in accordance with the applicable codes and standards.

Tyree house plans
 ORIGINAL DESIGN

Twelve Oaks

Anderson Architects
 Revised Design

DESIGNS HAVE BEEN MADE TO DRAWINGS BY OTHERS.
 REFER TO ORIGINAL DRAWINGS TO VERIFY ANY CHANGES TO THE ORIGINAL.
 NO GUARANTEE IS MADE BY THE ARCHITECT AS TO THE COMPLETENESS OR ACCURACY OF ORIGINAL DESIGN.

General Notes

All steel members shall be fabricated in accordance with the provisions of the AISC Specification for Structural Steel Buildings (AISC 360-16) and the provisions of the AISC Specification for Structural Steel Buildings (AISC 360-16) and the provisions of the AISC Specification for Structural Steel Buildings (AISC 360-16). All steel members shall be fabricated in accordance with the provisions of the AISC Specification for Structural Steel Buildings (AISC 360-16) and the provisions of the AISC Specification for Structural Steel Buildings (AISC 360-16). All steel members shall be fabricated in accordance with the provisions of the AISC Specification for Structural Steel Buildings (AISC 360-16) and the provisions of the AISC Specification for Structural Steel Buildings (AISC 360-16).

Foundations

Foundations shall be designed in accordance with the provisions of the ACI 318 Building Code Requirements for Structural Concrete (ACI 318-19) and the provisions of the ACI 318 Building Code Requirements for Structural Concrete (ACI 318-19). All foundations shall be designed in accordance with the provisions of the ACI 318 Building Code Requirements for Structural Concrete (ACI 318-19) and the provisions of the ACI 318 Building Code Requirements for Structural Concrete (ACI 318-19).

Concrete

Concrete shall be placed in accordance with the provisions of the ACI 318 Building Code Requirements for Structural Concrete (ACI 318-19) and the provisions of the ACI 318 Building Code Requirements for Structural Concrete (ACI 318-19). All concrete shall be placed in accordance with the provisions of the ACI 318 Building Code Requirements for Structural Concrete (ACI 318-19) and the provisions of the ACI 318 Building Code Requirements for Structural Concrete (ACI 318-19).

Welded Wire Fabric

Welded wire fabric shall be installed in accordance with the provisions of the ACI 318 Building Code Requirements for Structural Concrete (ACI 318-19) and the provisions of the ACI 318 Building Code Requirements for Structural Concrete (ACI 318-19). All welded wire fabric shall be installed in accordance with the provisions of the ACI 318 Building Code Requirements for Structural Concrete (ACI 318-19) and the provisions of the ACI 318 Building Code Requirements for Structural Concrete (ACI 318-19).

Reinforcing Steel

Reinforcing steel shall be installed in accordance with the provisions of the ACI 318 Building Code Requirements for Structural Concrete (ACI 318-19) and the provisions of the ACI 318 Building Code Requirements for Structural Concrete (ACI 318-19). All reinforcing steel shall be installed in accordance with the provisions of the ACI 318 Building Code Requirements for Structural Concrete (ACI 318-19) and the provisions of the ACI 318 Building Code Requirements for Structural Concrete (ACI 318-19).

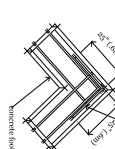
Formwork

Formwork shall be installed in accordance with the provisions of the ACI 318 Building Code Requirements for Structural Concrete (ACI 318-19) and the provisions of the ACI 318 Building Code Requirements for Structural Concrete (ACI 318-19). All formwork shall be installed in accordance with the provisions of the ACI 318 Building Code Requirements for Structural Concrete (ACI 318-19) and the provisions of the ACI 318 Building Code Requirements for Structural Concrete (ACI 318-19).

Chemical Analysis

Chemical analysis shall be performed in accordance with the provisions of the ACI 318 Building Code Requirements for Structural Concrete (ACI 318-19) and the provisions of the ACI 318 Building Code Requirements for Structural Concrete (ACI 318-19). All chemical analysis shall be performed in accordance with the provisions of the ACI 318 Building Code Requirements for Structural Concrete (ACI 318-19) and the provisions of the ACI 318 Building Code Requirements for Structural Concrete (ACI 318-19).

Typical Footing Detail



Wood

Wood shall be installed in accordance with the provisions of the ACI 318 Building Code Requirements for Structural Concrete (ACI 318-19) and the provisions of the ACI 318 Building Code Requirements for Structural Concrete (ACI 318-19). All wood shall be installed in accordance with the provisions of the ACI 318 Building Code Requirements for Structural Concrete (ACI 318-19) and the provisions of the ACI 318 Building Code Requirements for Structural Concrete (ACI 318-19).

Wood (Continued)

Wood shall be installed in accordance with the provisions of the ACI 318 Building Code Requirements for Structural Concrete (ACI 318-19) and the provisions of the ACI 318 Building Code Requirements for Structural Concrete (ACI 318-19). All wood shall be installed in accordance with the provisions of the ACI 318 Building Code Requirements for Structural Concrete (ACI 318-19) and the provisions of the ACI 318 Building Code Requirements for Structural Concrete (ACI 318-19).

Multi-member Connections



Wood Floor Joists



Header Framing Detail



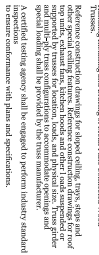
Wood Joist/Girder-to-Substrate Metal Plate Connection



Welding Schedule

Weld Type	Welding Process	Welding Procedure
1	Shielded Metal Arc	Welding Procedure 1
2	Shielded Metal Arc	Welding Procedure 2
3	Shielded Metal Arc	Welding Procedure 3
4	Shielded Metal Arc	Welding Procedure 4
5	Shielded Metal Arc	Welding Procedure 5
6	Shielded Metal Arc	Welding Procedure 6
7	Shielded Metal Arc	Welding Procedure 7
8	Shielded Metal Arc	Welding Procedure 8
9	Shielded Metal Arc	Welding Procedure 9
10	Shielded Metal Arc	Welding Procedure 10
11	Shielded Metal Arc	Welding Procedure 11
12	Shielded Metal Arc	Welding Procedure 12
13	Shielded Metal Arc	Welding Procedure 13
14	Shielded Metal Arc	Welding Procedure 14
15	Shielded Metal Arc	Welding Procedure 15
16	Shielded Metal Arc	Welding Procedure 16
17	Shielded Metal Arc	Welding Procedure 17
18	Shielded Metal Arc	Welding Procedure 18
19	Shielded Metal Arc	Welding Procedure 19
20	Shielded Metal Arc	Welding Procedure 20
21	Shielded Metal Arc	Welding Procedure 21
22	Shielded Metal Arc	Welding Procedure 22
23	Shielded Metal Arc	Welding Procedure 23

Steel & Building Detail



Present Detail Schedule / Imperial Only

Quantity	Symbol	Symbol	Length	Unit	Notes
1	10	10	78.5	ft	
2	10	10	413	ft	
3	10	10	413	ft	
4	10	10	986	ft	
5	10	10	2096	ft	
6	10	10	2277	ft	
7	10	10	2197	ft	
8	10	10	1856	ft	
9	10	10	1659	ft	
10	10	10	1423	ft	
11	10	10	1259	ft	
12	10	10	1428	ft	
13	10	10	104	ft	
14	10	10	931	ft	
15	10	10	786	ft	
16	10	10	786	ft	
17	10	10	786	ft	
18	10	10	786	ft	
19	10	10	786	ft	
20	10	10	786	ft	
21	10	10	786	ft	
22	10	10	786	ft	
23	10	10	786	ft	

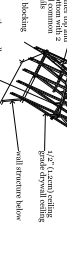
Truss Connection Schedule / Imperial Measurement Only

Connection	Quantity	Symbol	Symbol	Length	Unit	Notes
A	1	10	10	190	ft	
B	1	10	10	150	ft	
C	1	10	10	864	ft	
D	1	10	10	2190	ft	
E	1	10	10	2200	ft	
F	1	10	10	2775	ft	
G	1	10	10	1540	ft	
H	1	10	10	1540	ft	
I	1	10	10	1240	ft	
J	1	10	10	415	ft	
K	1	10	10	905	ft	
L	1	10	10	490	ft	
M	1	10	10	195	ft	

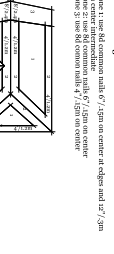
Roof Sheathing



Decking and Finishing



120-490 Electrical Panel Detail



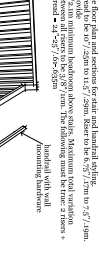
80-490 Electrical Panel Detail



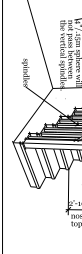
80-490 Electrical Panel Detail



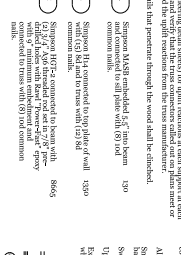
80-490 Electrical Panel Detail



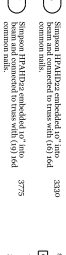
80-490 Electrical Panel Detail



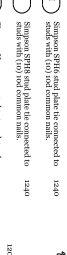
Rebar Details



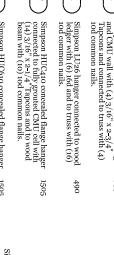
Rebar Details



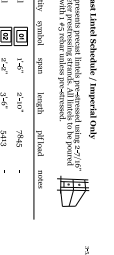
Rebar Details



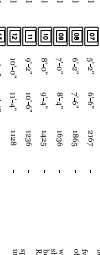
Rebar Details



Rebar Details



Rebar Details



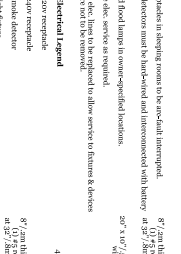
Rebar Details



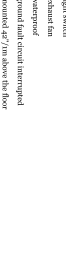
Rebar Details



Rebar Details



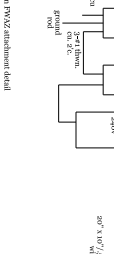
Rebar Details



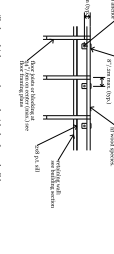
Rebar Details



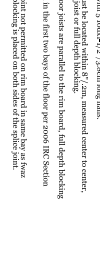
Rebar Details



Rebar Details



Rebar Details



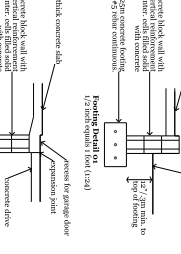
Rebar Details



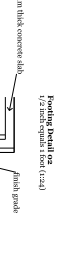
Rebar Details



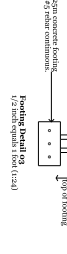
Rebar Details



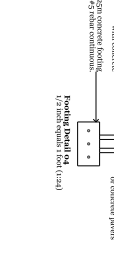
Rebar Details



Rebar Details



Rebar Details



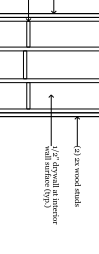
Rebar Details



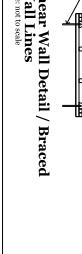
Rebar Details



Rebar Details



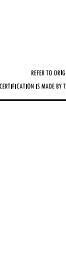
Rebar Details



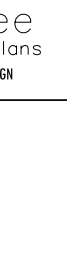
Rebar Details



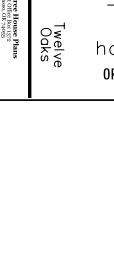
Rebar Details



Rebar Details



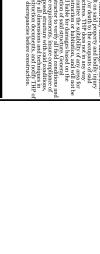
Rebar Details



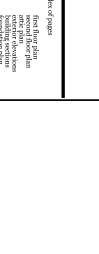
Rebar Details



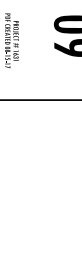
Rebar Details



Rebar Details



Rebar Details



Rebar Details



Rebar Details



Rebar Details



Rebar Details



Rebar Details



Rebar Details



Rebar Details



Rebar Details



Rebar Details



Rebar Details



Rebar Details



Rebar Details



Rebar Details



Rebar Details



Rebar Details



Rebar Details



Rebar Details

Rebar Details

Rebar Details

Rebar Details