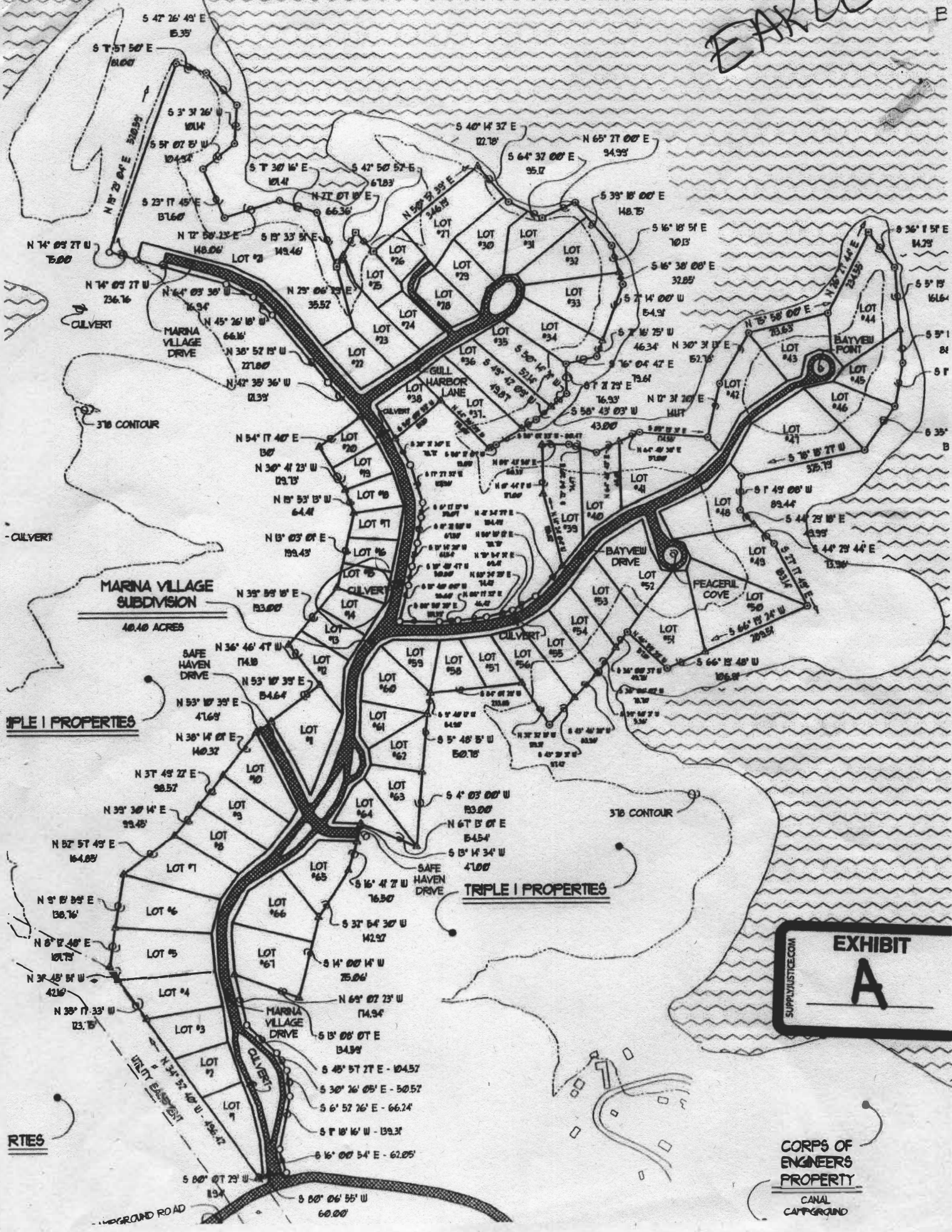


EAKLE B



TRIPLE I PROPERTIES

TRIPLE I PROPERTIES

EXHIBIT
A

CORPS OF
ENGINEERS
PROPERTY
CANAL
CAMPGROUND

RTES

UNDERGROUND ROAD

Phase 1

Phase 2



96 = 0.420 Acres	111 = 0.420 Acres
97 = 0.450 Acres	112 = 0.450 Acres
83 = 0.389 Acres	113 = 0.390 Acres
84 = 0.300 Acres	99 = 0.398 Acres
85 = 0.276 Acres	100 = 0.454 Acres
86 = 0.310 Acres	101 = 0.386 Acres
87 = 0.292 Acres	102 = 0.342 Acres
75 = 0.402 Acres	103 = 0.335 Acres
76 = 0.400 Acres	89 = 0.293 Acres
77 = 0.344 Acres	90 = 0.269 Acres
78 = 0.341 Acres	91 = 0.231 Acres
79 = 0.304 Acres	92 = 0.348 Acres
80 = 0.280 Acres	93 = 0.464 Acres
81 = 0.297 Acres	94 = 0.329 Acres
82 = 0.263 Acres	95 = 0.388 Acres
	104 = 0.434 Acres
	105 = 0.768 Acres
	106 = 0.623 Acres
	107 = 0.390 Acres
	108 = 0.381 Acres
	109 = 0.393 Acres
	110 = 0.388 Acres
	114 = 0.398 Acres
	115 = 0.454 Acres
	116 = 0.386 Acres
	117 = 0.342 Acres
	118 = 0.335 Acres
	119 = 0.434 Acres
	120 = 0.768 Acres
	121 = 0.390 Acres
	C1 = 3.270 Acres



This plan is not intended to be used as a legal description of the property or as a deed. Authorized persons only should be used to issue any of these. Authorized persons are subject to change. All other dimensions, boundaries, easements, and acreages will vary from the above representations.

T. 1/2"
N PIN
(L.S.3445)

72.07'
N 61°01'21" W

120
PLAT D SLIDE 185

EXIST. 1/2"
IRON PIN
(L.S.3445)

121
PLAT CABINET D SLIDE 185

N 53°18'18" E
214.76'

LOT C1-B
TRACT I OF C1
TRIPLE I PROPERTIES, INC.
DEED BOOK 175 PAGE 585
0.4033 ACRES

187.66'
N 54°32'30" E
S 54°32'30" W
187.66'

LOT C1-A
TRACT I OF C1
TRIPLE I PROPERTIES, INC.
DEED BOOK 175 PAGE 585
0.3546 ACRES

EXIST. 1/2"
IRON PIN
(L.S.3445)

89.98'
N 51°37'45" W

S 35°49'06" E
89.98'

MARINA VILLAGE DRIVE

S 35°48'12" E
89.98'

EXIST. 1/2"
IRON PIN
(L.S.3445)

163.18'
S 55°47'33" W

GULL HARBOR LANE

TO DE
+/- 0.4 MA
CAMPGR

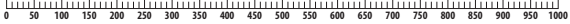


GREEN TURTLE BAY
MARINA

- 831 LAMPKINS
- 835 WHEELER
- 839 CULBERTSON
- 821 PHILIPS
- 825 HEUMAN
- 829 THOMPSON
- 811 SCHUCKERMAN
- 815 SMITH
- 819 WEBB
- 801 BRAUN
- 805 LINDLEY
- 809 BRUBAKER
- 791 HIGGINS
- 795 GOODMAN
- 799 POETTKER
- 781 WATKINS
- 785 DRURY
- 789 BUCHANAN

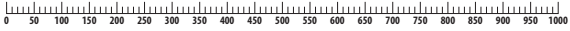


ADDRESS NUMBERS





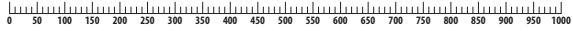
GREEN TURTLE BAY
MARINA



LOT NUMBERS



GREEN TURTLE BAY
MARINA



MAIN & ANCILLARY ROAD ID