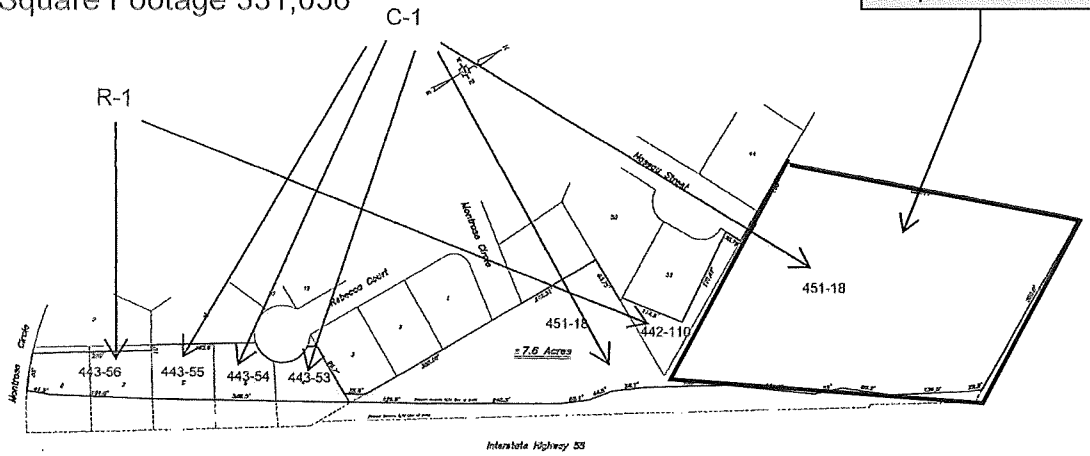


Frontage 1,693.5'  
Square Footage 331,056

Sold part of 451-18



NOTE:  
This plan is a description of land divisions, zoning,  
restrictions and zoning by name and date set in by  
any relevant & laws.

PART OF  
THE BAILEY COMPANY, LTD, PROPERTY  
Situating in Sections 23 and 20, TEN-R1E  
Jackson, Hinds County, Mississippi  
Case & Association, Inc.  
C.A. 81-23 12-20-1968 1/12/69 1/12/69 1/12/69  
Revised 7/1/71