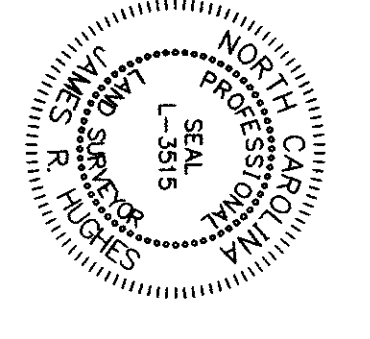
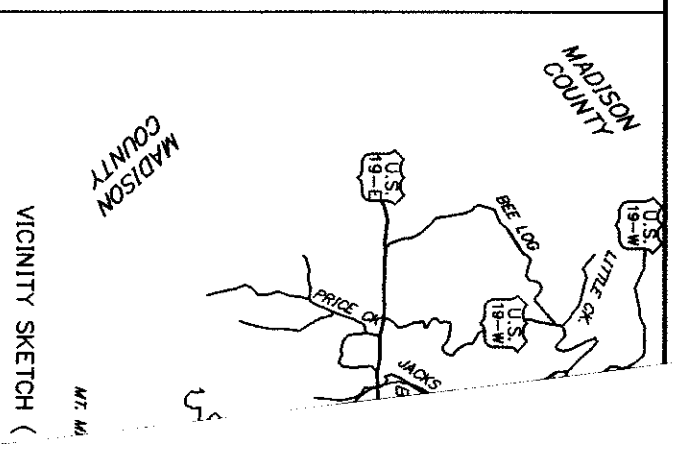
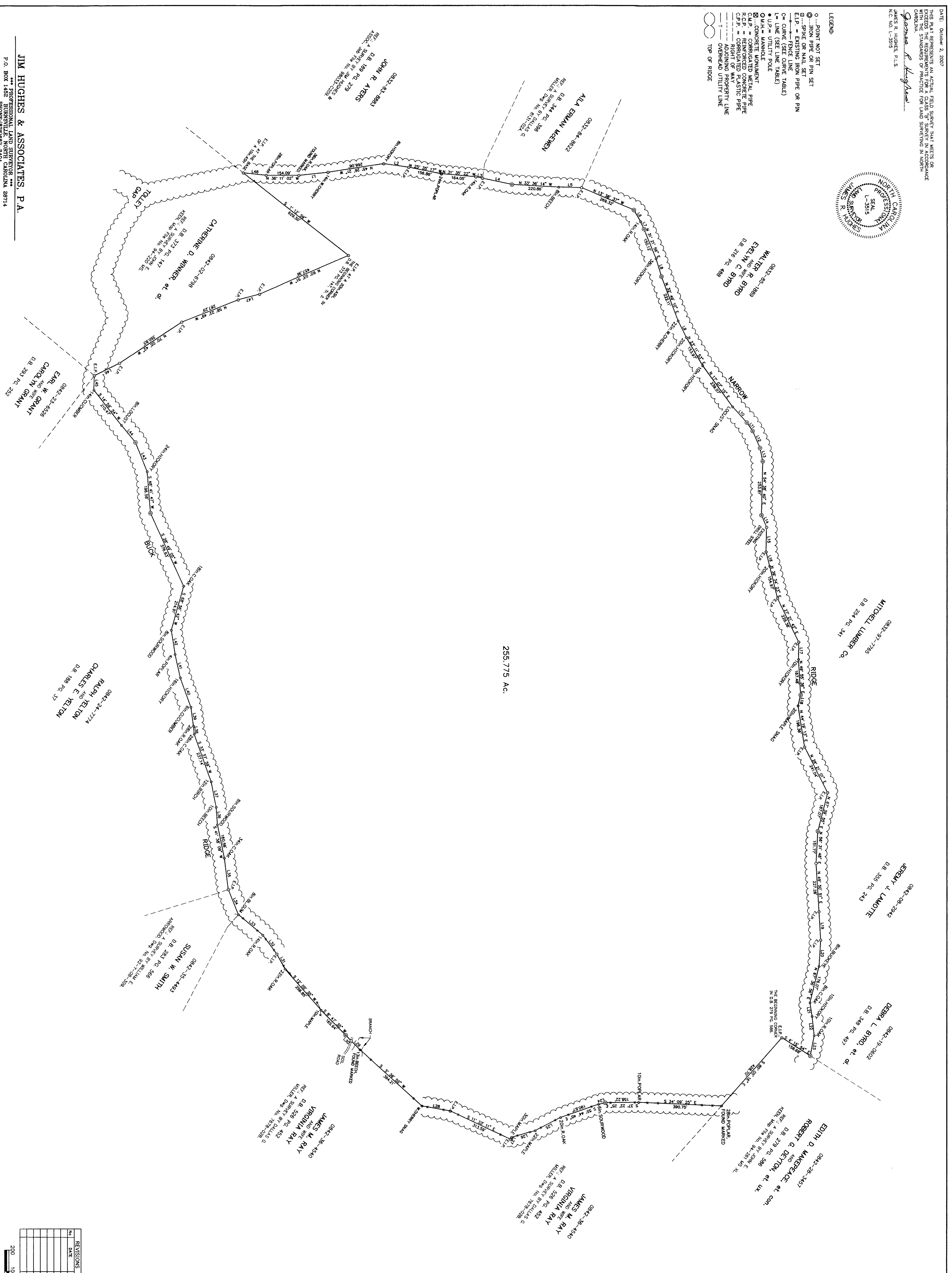


DATE: October 2, 2007  
 THIS PLAT REPRESENTS AN ACTUAL FIELD SURVEY THAT MEETS OR EXCEEDS THE REQUIREMENTS FOR A CLASS "B" SURVEY IN ACCORDANCE WITH THE REQUIREMENTS OF PARAGRAPH 10.01 OF THE SURVEYING ACT OF 1978, AS AMENDED, IN NORTH CAROLINA.  
 JAMES R. HUGHES, P.L.S.  
 JAMES R. HUGHES, P.L.S.  
 No. 10, L-353



- LEGEND
- POINT NOT SET
  - POINT SET ON PIN
  - SPIKE OR NAIL SET
  - EXISTING IRON PIPE OR PIN
  - FENCE LINE
  - CURVE (SEE CURVE TABLE)
  - LINE (SEE LINE TABLE)
  - UTILITY POLE
  - MANHOLE
  - CORRUGATED METAL PIPE
  - CORRUGATED CONCRETE PIPE
  - CORRUGATED PLASTIC PIPE
  - ADJOINING PROPERTY LINE
  - OVERHEAD UTILITY LINE
  - TOP OF RIDGE



NORTH RELATIVE TO A SURVEY  
 BY JIM HUGHES & ASSOCIATES, P.A.  
 JOB FILE NO. 8942

Line	Bearing	Distance
1	N 13.25° E	138.22
2	N 22.22° E	119.15
3	N 22.22° E	119.15
4	N 22.22° E	119.15
5	N 22.22° E	119.15
6	N 22.22° E	119.15
7	N 22.22° E	119.15
8	N 22.22° E	119.15
9	N 22.22° E	119.15
10	N 22.22° E	119.15
11	N 22.22° E	119.15
12	N 22.22° E	119.15
13	N 22.22° E	119.15
14	N 22.22° E	119.15
15	N 22.22° E	119.15
16	N 22.22° E	119.15
17	N 22.22° E	119.15
18	N 22.22° E	119.15
19	N 22.22° E	119.15
20	N 22.22° E	119.15
21	N 22.22° E	119.15
22	N 22.22° E	119.15
23	N 22.22° E	119.15
24	N 22.22° E	119.15
25	N 22.22° E	119.15
26	N 22.22° E	119.15
27	N 22.22° E	119.15
28	N 22.22° E	119.15
29	N 22.22° E	119.15
30	N 22.22° E	119.15
31	N 22.22° E	119.15
32	N 22.22° E	119.15
33	N 22.22° E	119.15
34	N 22.22° E	119.15
35	N 22.22° E	119.15
36	N 22.22° E	119.15
37	N 22.22° E	119.15
38	N 22.22° E	119.15
39	N 22.22° E	119.15
40	N 22.22° E	119.15
41	N 22.22° E	119.15
42	N 22.22° E	119.15
43	N 22.22° E	119.15
44	N 22.22° E	119.15
45	N 22.22° E	119.15
46	N 22.22° E	119.15
47	N 22.22° E	119.15
48	N 22.22° E	119.15
49	N 22.22° E	119.15
50	N 22.22° E	119.15
51	N 22.22° E	119.15
52	N 22.22° E	119.15
53	N 22.22° E	119.15
54	N 22.22° E	119.15
55	N 22.22° E	119.15
56	N 22.22° E	119.15
57	N 22.22° E	119.15
58	N 22.22° E	119.15
59	N 22.22° E	119.15
60	N 22.22° E	119.15
61	N 22.22° E	119.15
62	N 22.22° E	119.15
63	N 22.22° E	119.15
64	N 22.22° E	119.15
65	N 22.22° E	119.15
66	N 22.22° E	119.15
67	N 22.22° E	119.15
68	N 22.22° E	119.15
69	N 22.22° E	119.15
70	N 22.22° E	119.15
71	N 22.22° E	119.15
72	N 22.22° E	119.15
73	N 22.22° E	119.15
74	N 22.22° E	119.15
75	N 22.22° E	119.15
76	N 22.22° E	119.15
77	N 22.22° E	119.15
78	N 22.22° E	119.15
79	N 22.22° E	119.15
80	N 22.22° E	119.15
81	N 22.22° E	119.15
82	N 22.22° E	119.15
83	N 22.22° E	119.15
84	N 22.22° E	119.15
85	N 22.22° E	119.15
86	N 22.22° E	119.15
87	N 22.22° E	119.15
88	N 22.22° E	119.15
89	N 22.22° E	119.15
90	N 22.22° E	119.15
91	N 22.22° E	119.15
92	N 22.22° E	119.15
93	N 22.22° E	119.15
94	N 22.22° E	119.15
95	N 22.22° E	119.15
96	N 22.22° E	119.15
97	N 22.22° E	119.15
98	N 22.22° E	119.15
99	N 22.22° E	119.15
100	N 22.22° E	119.15

REVISIONS	BY	DATE	INITIAL DATE	JOB FILE NO.
1	DRW / J.S. / C.F.	9-6-07		07138-C282
2	J.H.	10-2-07		1:10000

SCALE: 1" = 200' FILED: AS DRAWN BY: D.M.D./J.A.  
 LEAD: JAMES R. HUGHES, P.L.S. DATA STORAGE: SERVER  
 RECORD REFERENCES: D.B. 498 PG. 459  
 PARCEL ID: #8942-05-8912

SURVEYED FOR:  
**RA-MAC, LLC**  
 BRUSH CREEK TOWNSHIP  
 YANCEY COUNTY, N.C.

JIM HUGHES & ASSOCIATES, P.A.  
 PROFESSIONAL LAND SURVEYOR  
 P.O. BOX 145  
 PHONE: (828) 882-3404