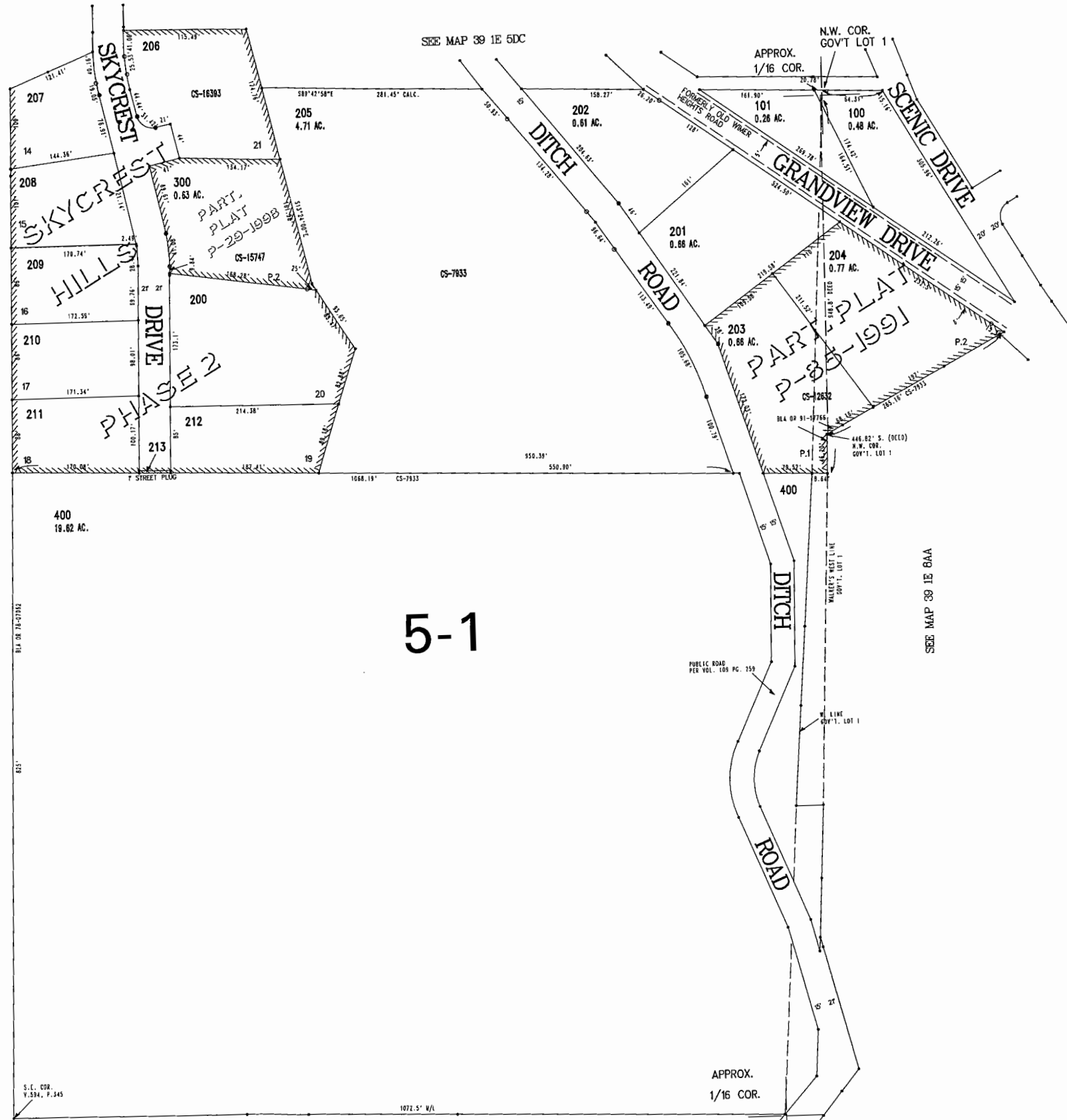
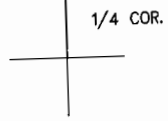
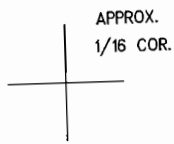


NW1/4 NE1/4 SEC. 8 T39S. R1E. W.M.
JACKSON COUNTY
1"= 100'

THIS MAP WAS PREPARED FOR
ASSESSMENT PURPOSE ONLY



5-1



METAFLE K:/MAP-TMP/391E/05/A/B0 PLAT.GRA
CREATED WEDNESDAY OCTOBER 04, 2000 8:55 AM By LUNDBEMR

SEE MAP 39 1E 8AC

SEE MAP 39 1E 8BA

SEE MAP 39 1E 8AA