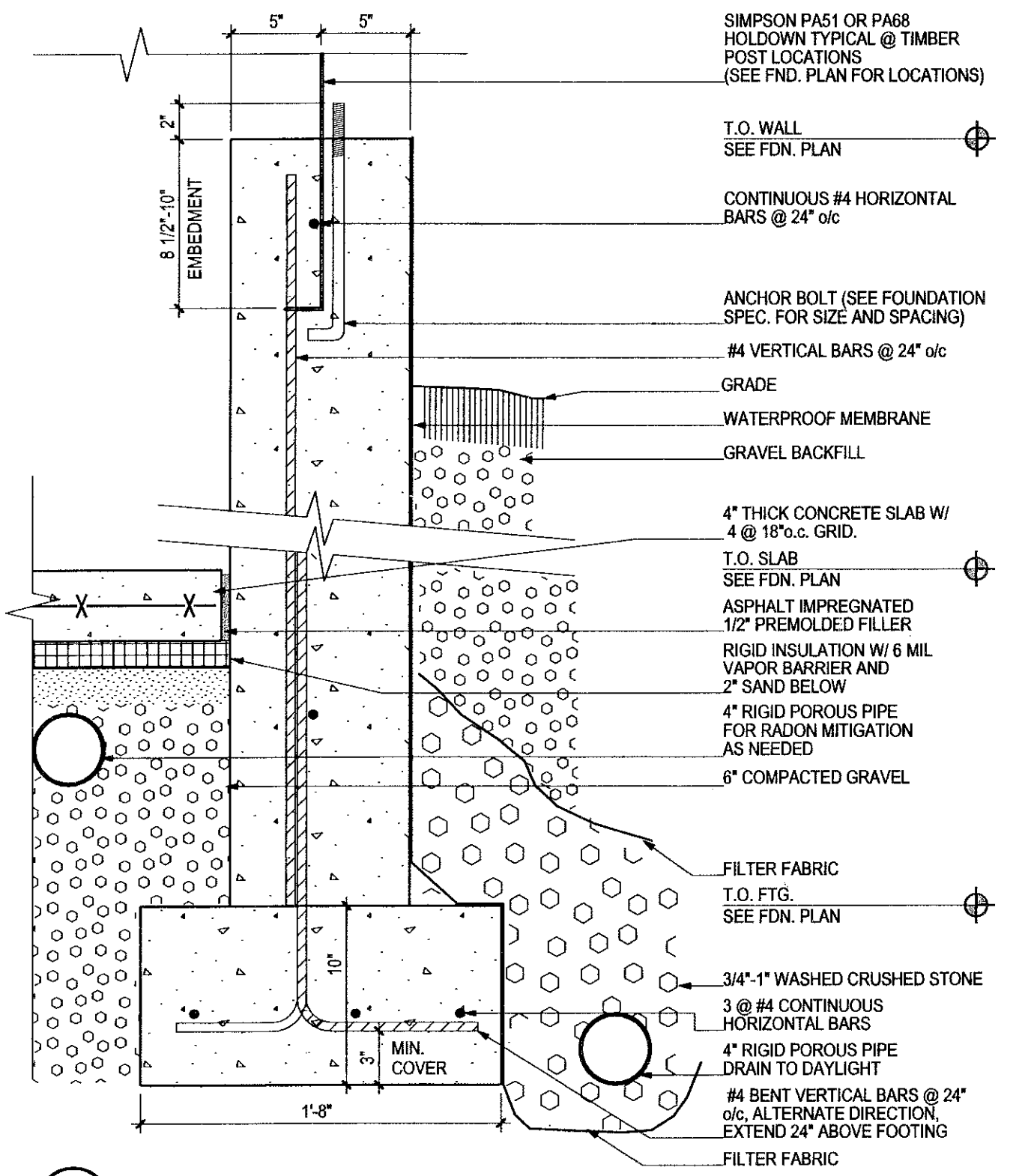
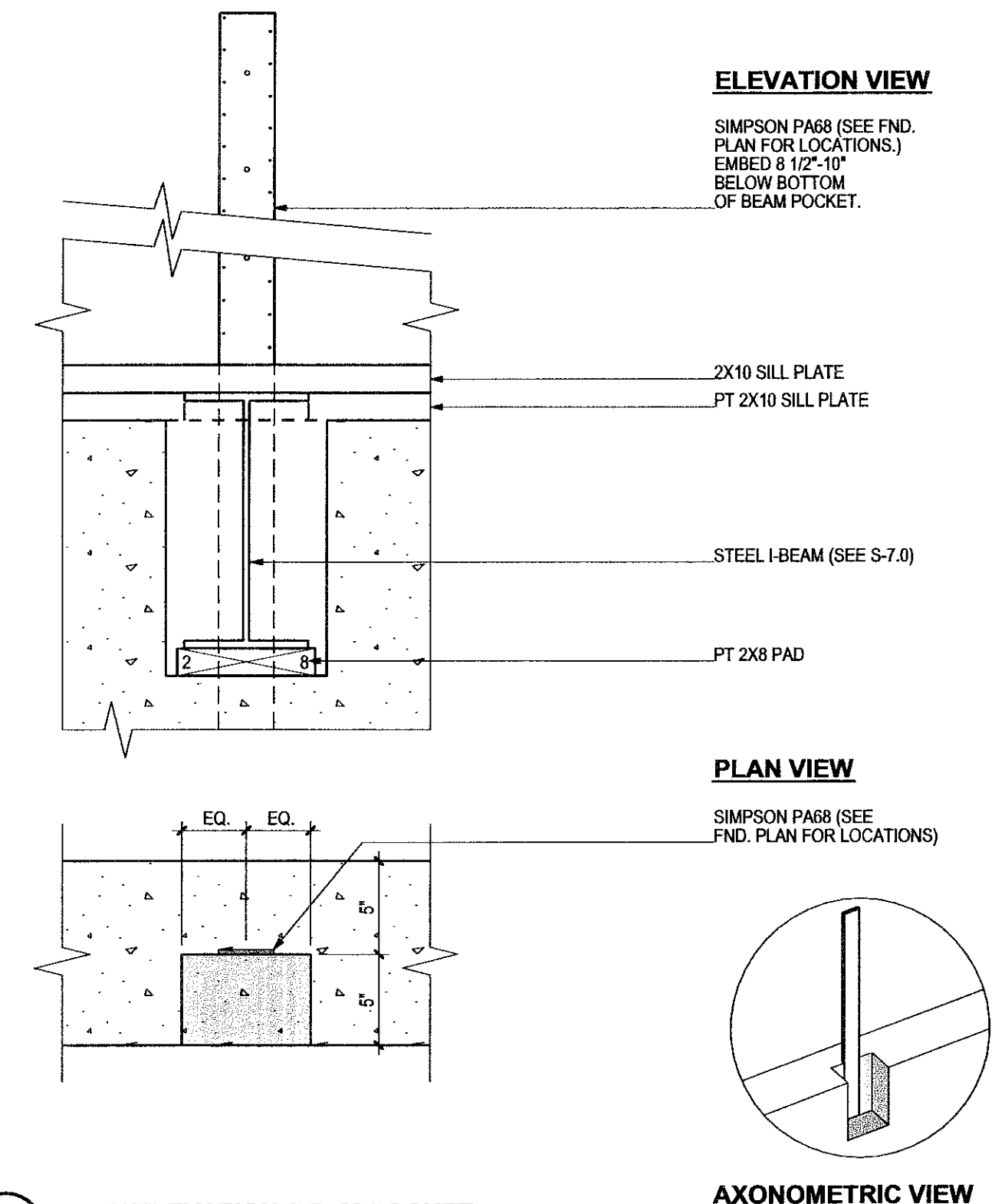


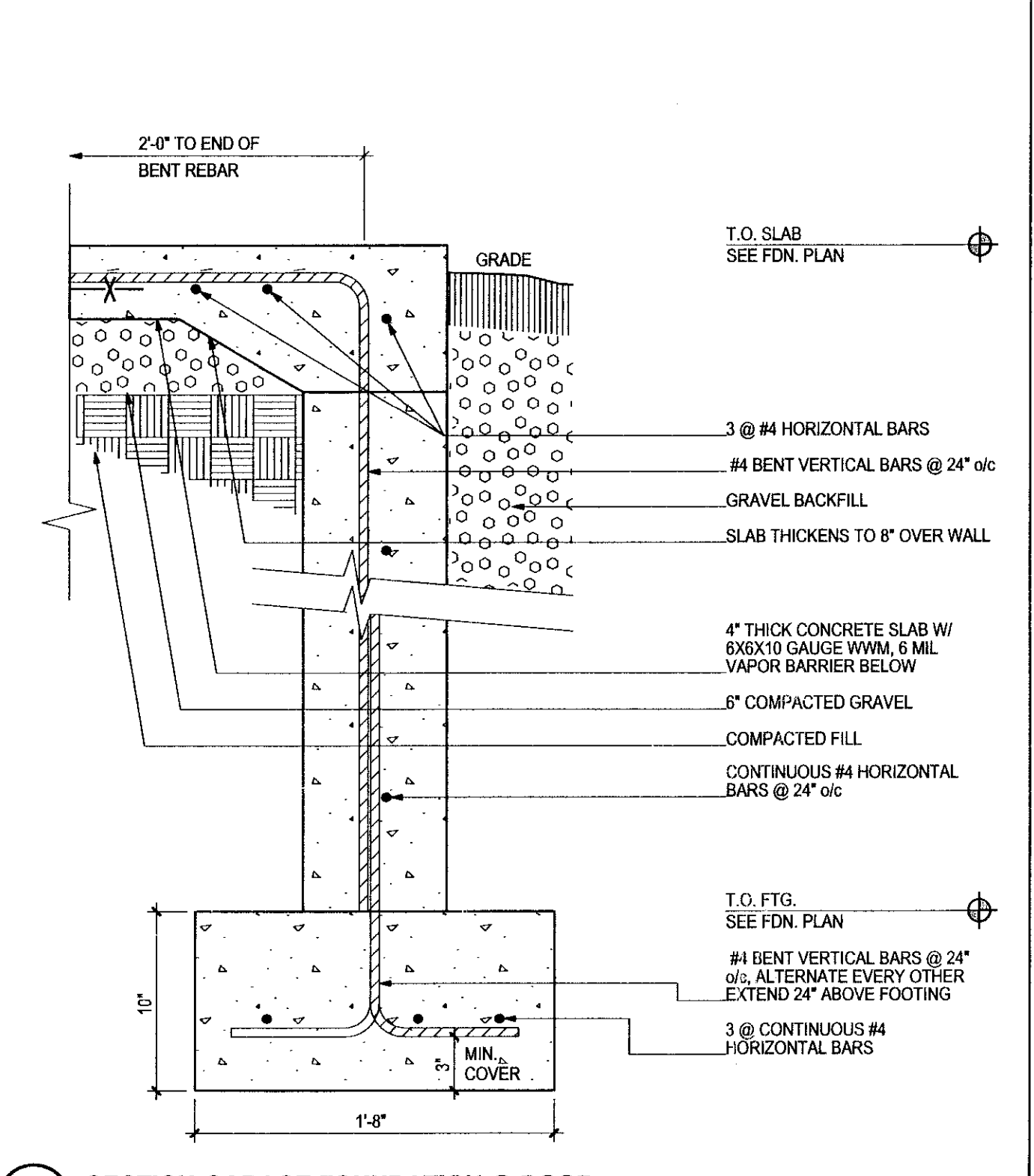
1 SECTION-TYPICAL CRAWSPACE FOUNDATION WALL
SCALE: 1 1/2"=1'-0" ALL NOTES TYPICAL U.N.O.



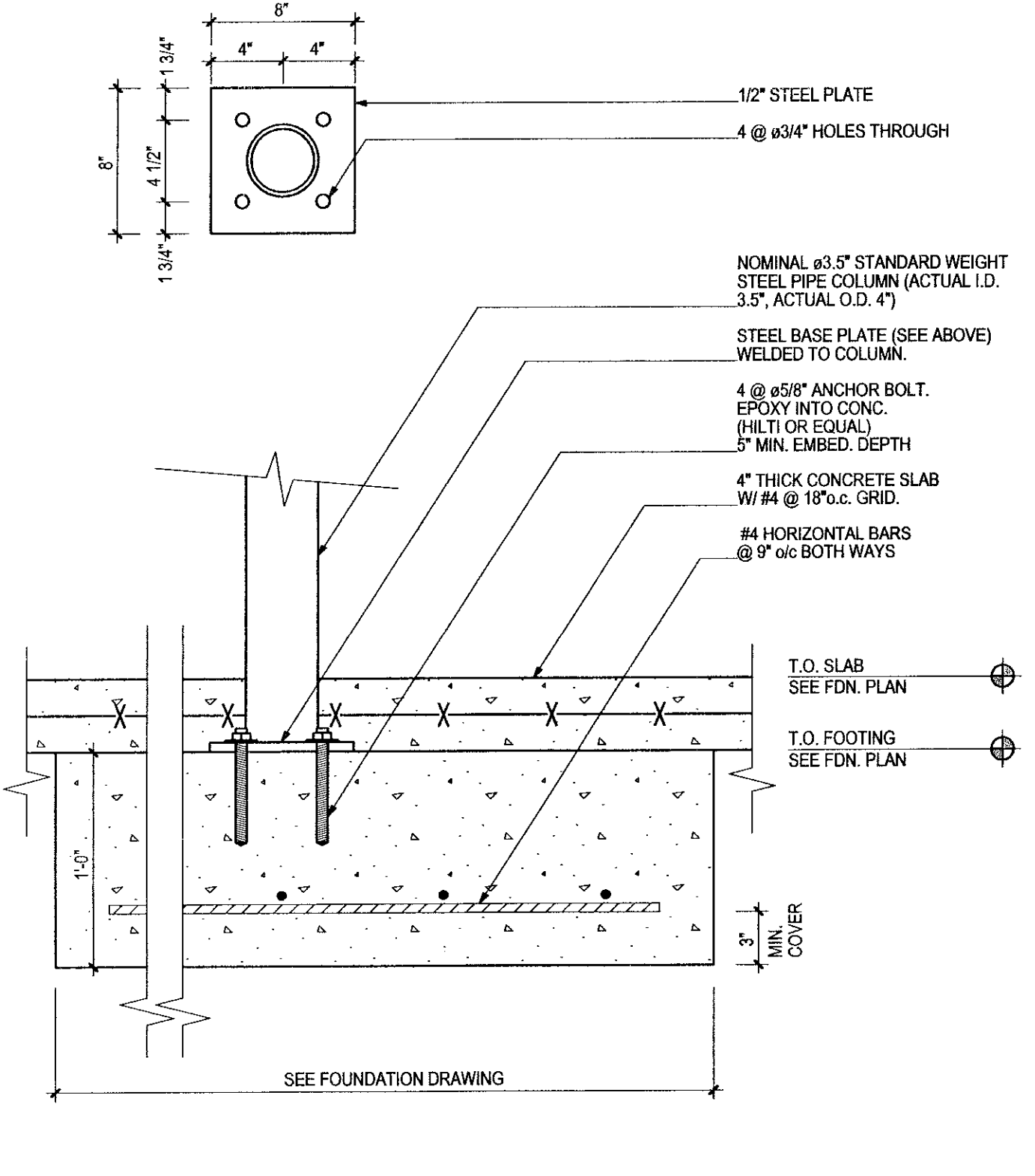
2 SECTION-GARAGE: FULL HEIGHT FOUNDATION WALL AND SLAB
SCALE: 1 1/2"=1'-0"



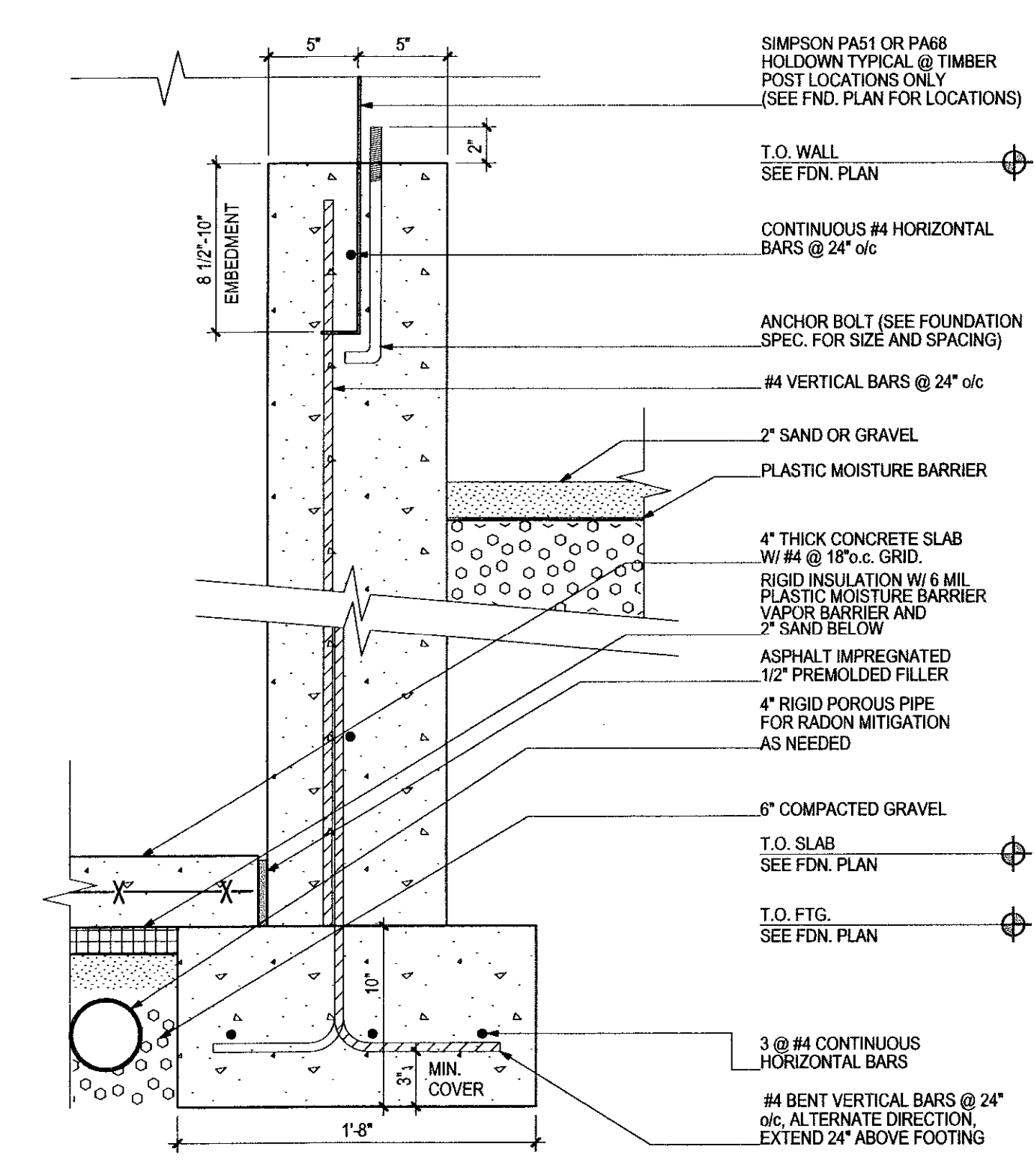
3 PLAN/ELEVATION-BEAM POCKET
SCALE: 1 1/2"=1'-0"



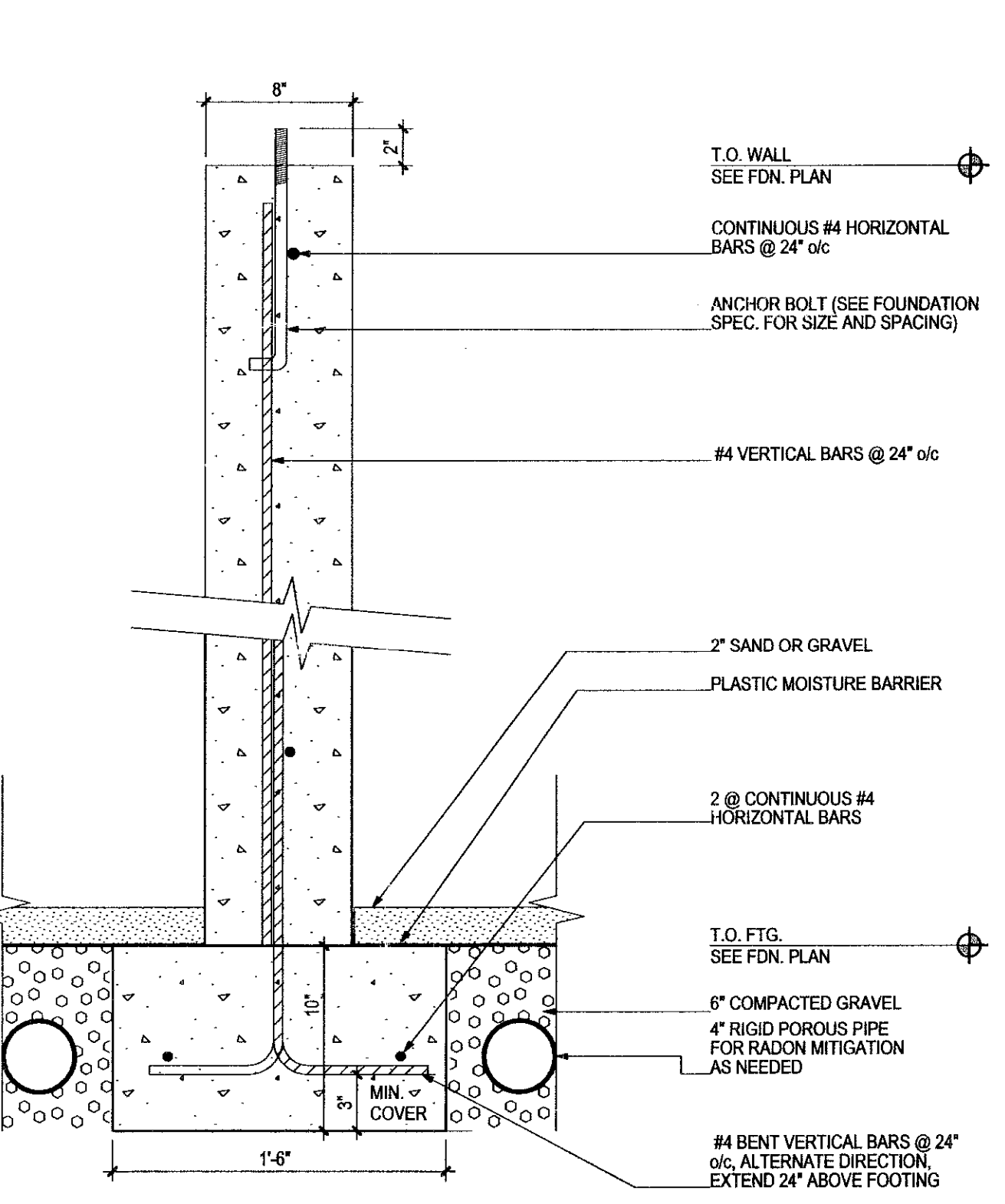
4 SECTION-GARAGE FOUNDATION @ DOOR
SCALE: 1 1/2"=1'-0"



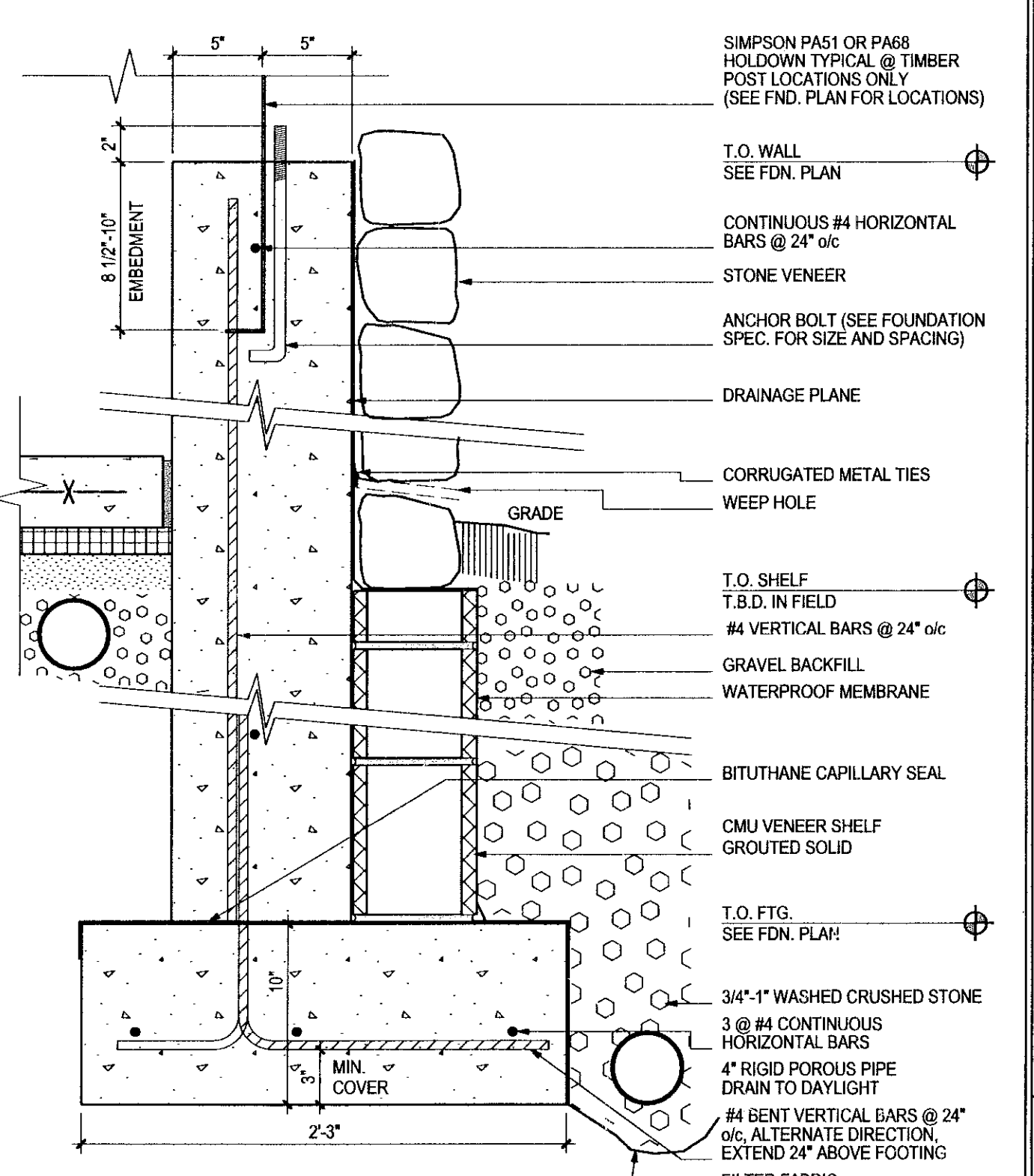
5 SECTION-INTERIOR POST FOOTING W/ STEEL PIPE COLUMN
SCALE: 1 1/2"=1'-0"



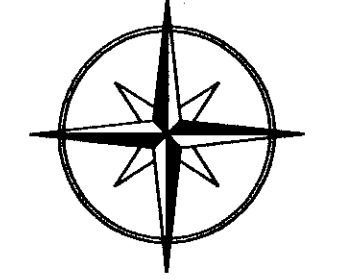
6 SECTION-FOUNDATION WALL BETWEEN GARAGE AND CRAWLSPACE
SCALE: 1 1/2"=1'-0"



7 SECTION-INTERIOR CONCRETE SUPPORT WALL IN CRAWLSPACE
SCALE: 1 1/2"=1'-0"



8 SECTION-GARAGE FOUNDATION WALL W/ CMU VENEER SHELF
SCALE: 1 1/2"=1'-0"



STAMP		DATE	BY	DATE	DATE
REVISIONS	DATE				

DATE: 30 APR 04
SCALE: 1 1/2"=1'0"
DSN TEAM: AK/CA/RW
COPYRIGHT 2004

THE EAGLES NEST - RIDGEWAY, CO
FOUNDATION DETAILS
BENSON WOODWORKING CO. INC. 6 BLACKJACK CROSSING, WALPOLE, NEW HAMPSHIRE 03608
PH:603 756 3600 FAX:603 756 3200 www.bensonwood.com

FOR: CONSTRUCTION
SHEET: S-6.2