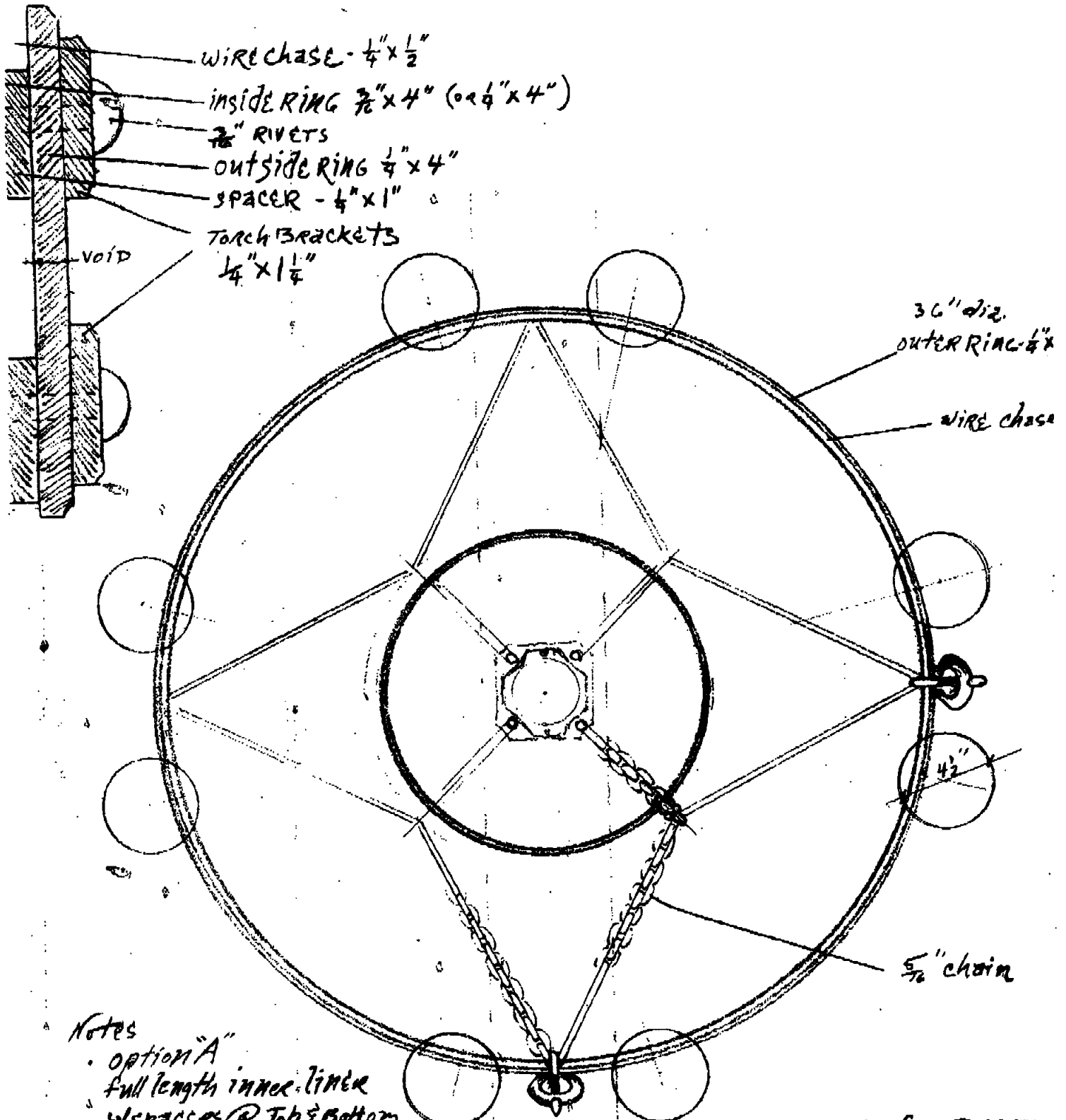


Scale - 1" = 6"

[Signature]
© 2004

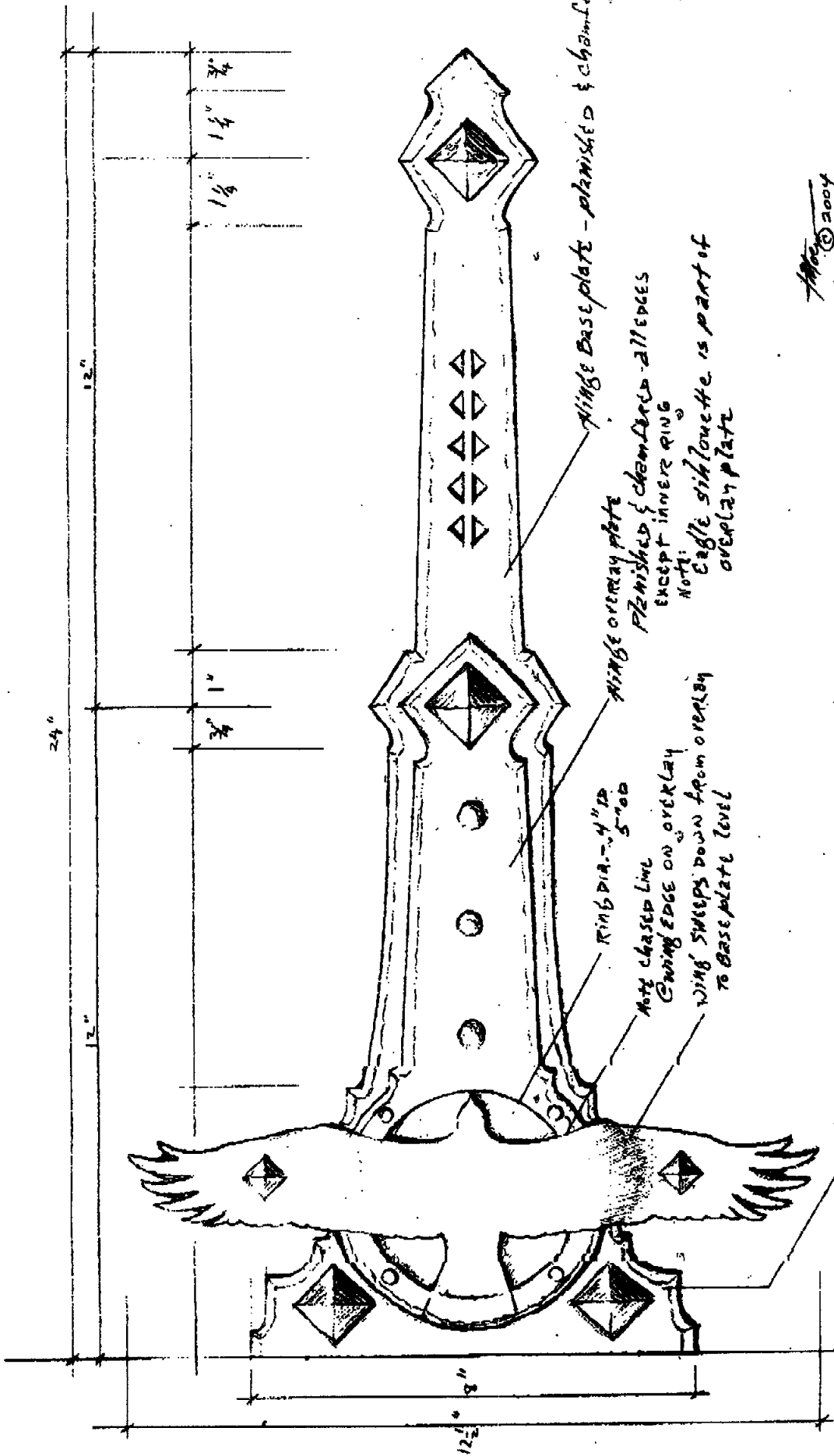
Dining Room Chandelier
 Wrought Iron
 Eagle's Nest.
 for
 Vince Kontny



Notes

- OPTION "A"
Full length inner liner
w/spacers @ Top & Bottom
- OPTION "B"
 $1 \frac{3}{4}$ " INNER LINER - TOP
only to hide WIRE CHASE
- PLAINISH ALL EXPOSED FACES
- CHAMFER EDGES
- RIVETS - DOMED BOTH FACES

- NOTE FLANGED SOCKET FOR RIVETS
IN ANCHOR BRACKETS
- 15" OD - $\frac{1}{4} \times 3$ " BRIDLE RING
- EIGHT TORCHES - CLUSTERED IN PAIRS



Moe © 2004

Eagles Nest
 Wrought Iron Hinge
 DESIGN
 for
 Vince Kontar

Electric Oven

Site Preparation Specification Sheet

Specifications are subject to change. Please contact Heatwave Appliances Inc. before using this manual to ensure you are using the most up to date information as it applies to the product you are purchasing.

Model 9720/9730 Electric Convection & Half Wall Oven

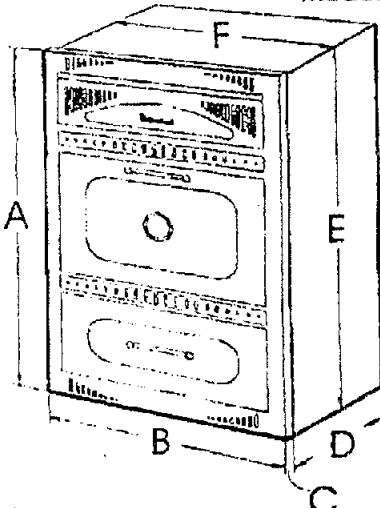


Figure 1

Dim	9720 / 9730
A	38" (96.5 cm)
B	23.5" (59.7 cm)
C	1.5" (3.81cm)
D	23 3/4" (60.3cm)
E	37" (94cm)
F	22 1/2" (57.2cm)

Table 1

800-361-1517

Installation:

- The wall oven face will meet your cabinet facing resulting in some heat transfer to the cabinet facing. If your cabinets have a plastic coating or veneer check with the manufacturer to ensure it was applied with a (300°F) heat resistant adhesive. If the plastic coating and the adhesive are not heat resistant, it is possible that the coating will deform or become detached, particularly along the edges that meet the wall oven.
- Floor of opening must be constructed to support 250 lbs (113 Kg) of weight.
- You must have a licenced electrician connect the new oven to ensure that all electrical codes and rules are observed.
- Stove must be electrically grounded in compliance with local codes. In the absence of local codes, with the National Electrical code ANSI/NFPA 70 "Latest Edition" in the US or in Canada with the Canadian Electrical Code, Part I, CSA Standard C22, or the Local National Electrical Code.

Anti Tip Brackets:

- Brackets included with every stove. When properly installed, will prevent stove from tipping forward if downward force is applied to an open door (Figure 2).

Electrical requirements:

- Electrical hookup must be performed by a licenced electrician
- 240 Volts 60Hz 6.3 Kw
- Licenced Electrician to hardwire house wiring to junction box (supplied with stove, as show in Figure 2)

Dim	9720 / 9730
G	22 3/4" (57.8 cm)
H	37 1/4" (94.8cm)
I	31" (78.7cm)
J	24" (58.8cm)
K	2 1/2" (6.4cm)
L	16 1/4" (41 cm)
M	5 1/2" (14 cm)

Table 2

Note: If built in must stand beside a refrigerator, it is important for proper air circulation that there be at least 5" (125 mm) of space between the two appliances.

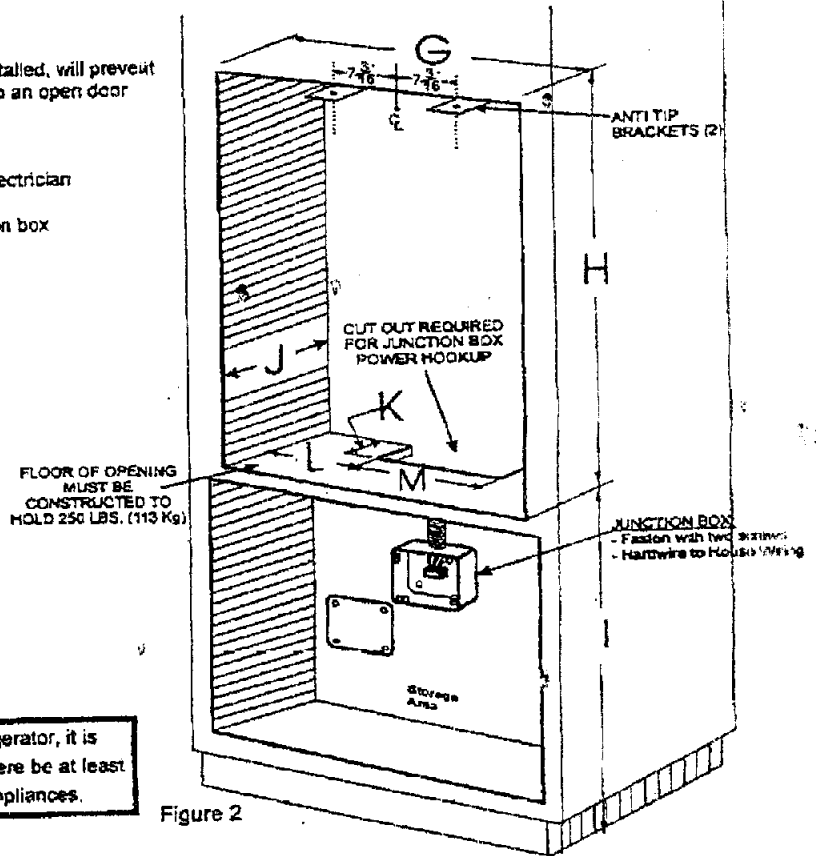


Figure 2

Great Room
Wrought Iron Chandelier

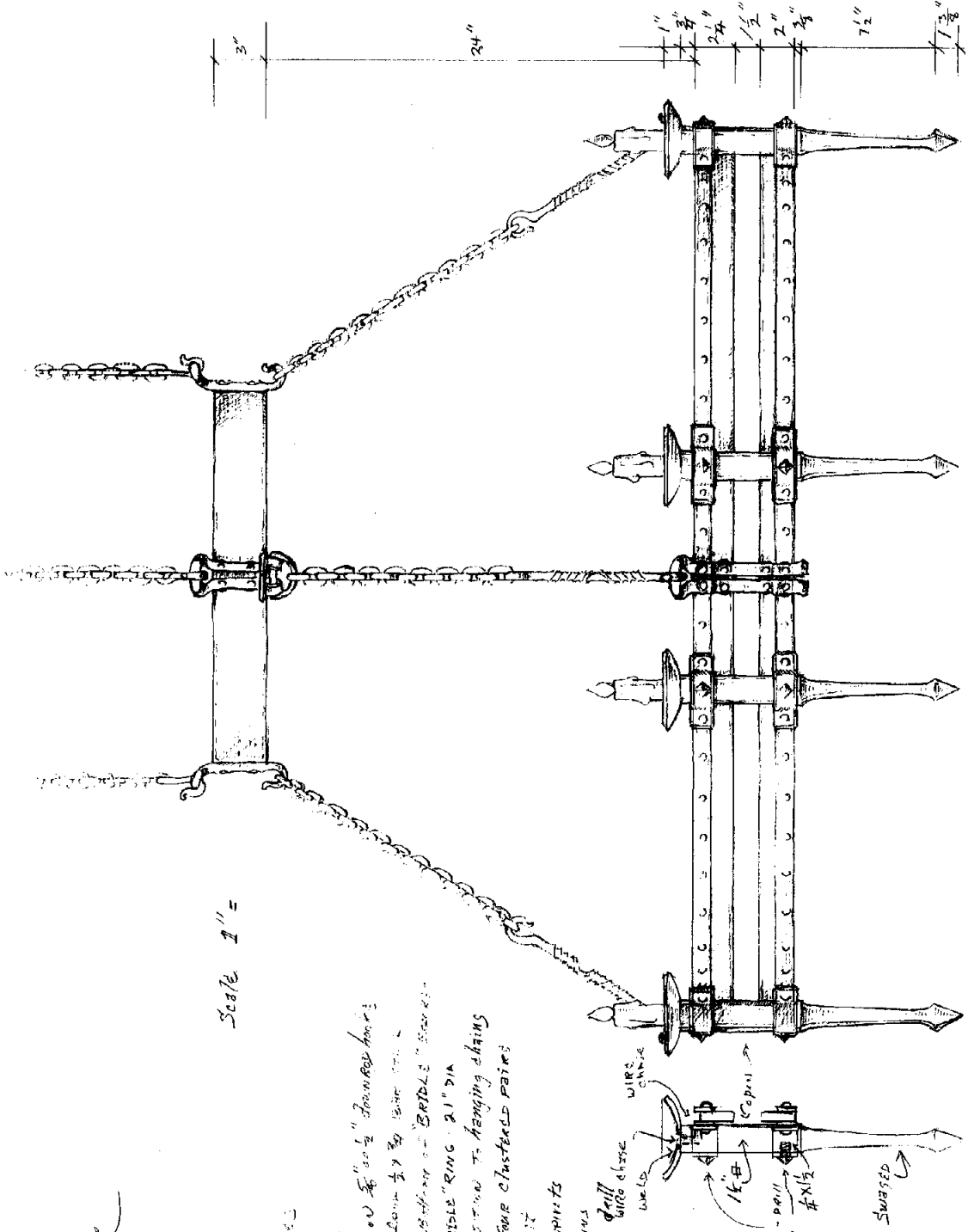
Vince Koutny
Coffin Nest Project

Scale 1" =

- Notes:
- Finish all outside faces
 - Chamfer edges
 - Dome rivets - both faces
 - 3/16" x 1/2" hex nuts - twist on 1/4" x 1/2" round rods
 - Angle brackets - 1/2" x 1/2" x 1/2"
 - Note flattened scrolls (to hold on to "BRIDLE" rings)
 - Simple 3" iron ring for "BRIDLE" RING 2 1/2" DIA
To create spiral transition to hanging chains
 - Eight teardrop shaped into four clustered pairs
for decorative interest
 - Note spacing of dome rivets
 - Simple assembly - yet retains
dramatic proportions & key
formal elements

- Primary runs 3" x 2"
- Secondary runs 4" x 1"
- Teardrop brackets 1/2" x 1 1/2"
- Caps 1/2" x 1/2" dia
- 3/8" chain

AMC
© 2004



Primary Run 4 1/2" DIA
Chandelier 54 1/2" H

Great Room Mural Iron Chandelier

1/2" x 1/2" x 1/2" x 1/2"



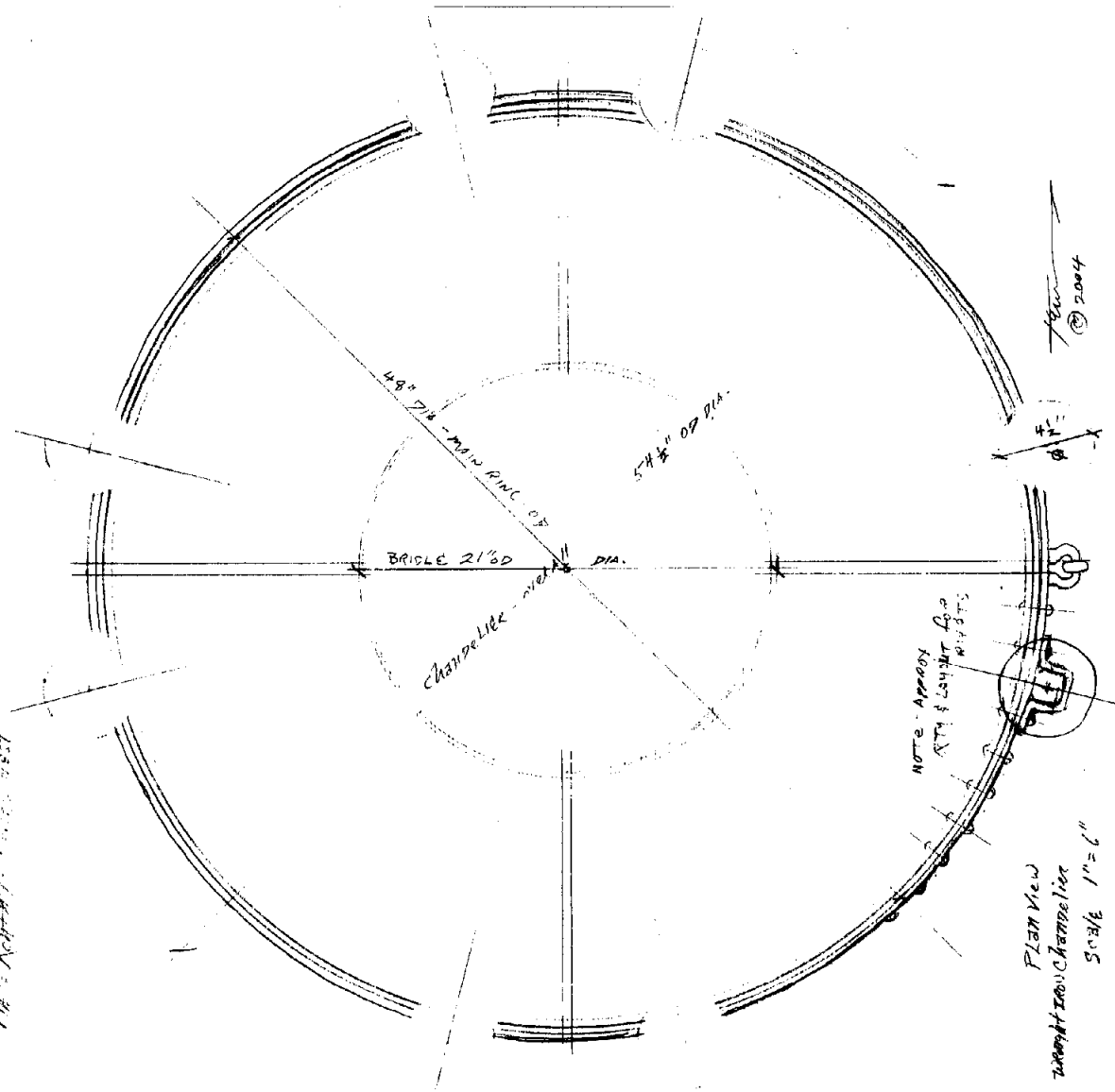
CHANDLIER RINGS
SECTION THRU

Scale - Full Size



options

- ① ALTERNATE - INNER RING DIM $\frac{1}{2}$ "
- ② ALTERNATE - NO LOWER INNER RING
- ③ ALTERNATE - SPACING RING $\frac{1}{2}$ " TO $\frac{3}{4}$ "
- ④ ALTERNATE - INNER RING WITH SLOPE HIGHLY POLISHED TO REVEAL ON BOTTOM RING

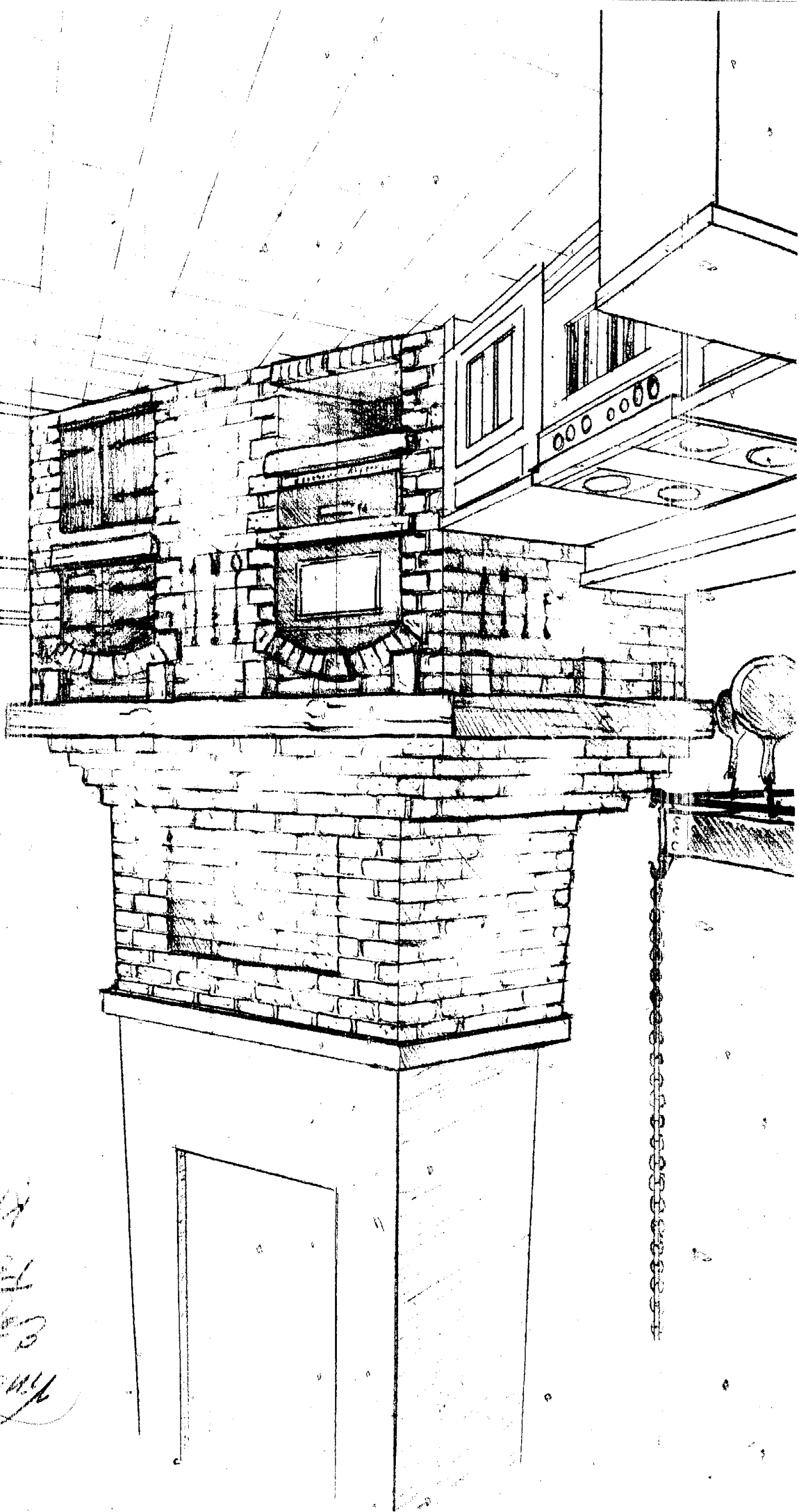


PLAN VIEW
MURAL IRON CHANDLIER
SCALE 1" = 6"

1/2" x 1/2" x 1/2" x 1/2"

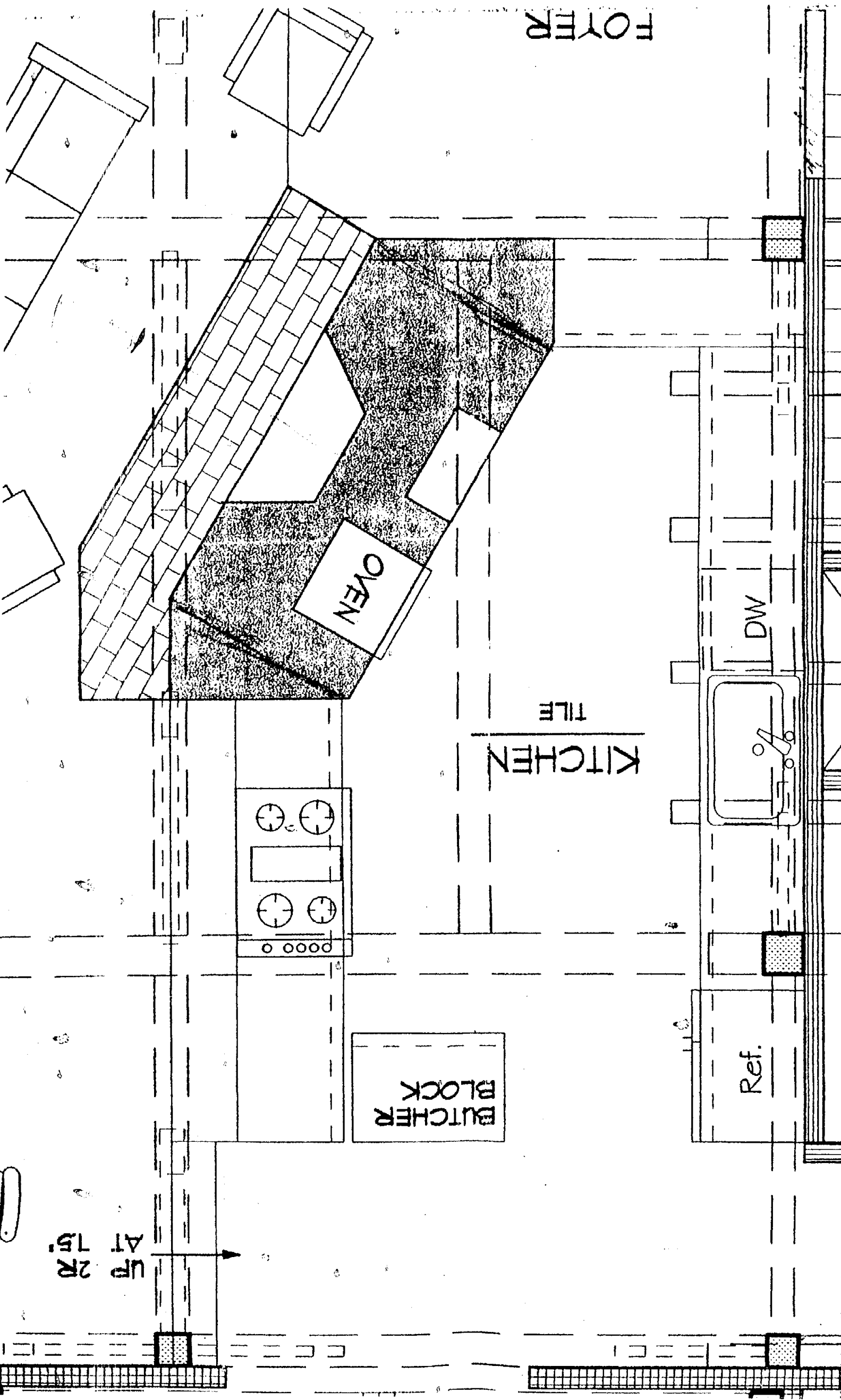
NOTE - APPROX
ATTN & LIGHTING
RINGS

1/2" x 1/2" x 1/2" x 1/2"



James Kohn
Architect
1035 P St
Kitchener
ON
M5E 1A5
- 2/R01

FOYER



OVEN

KITCHEN

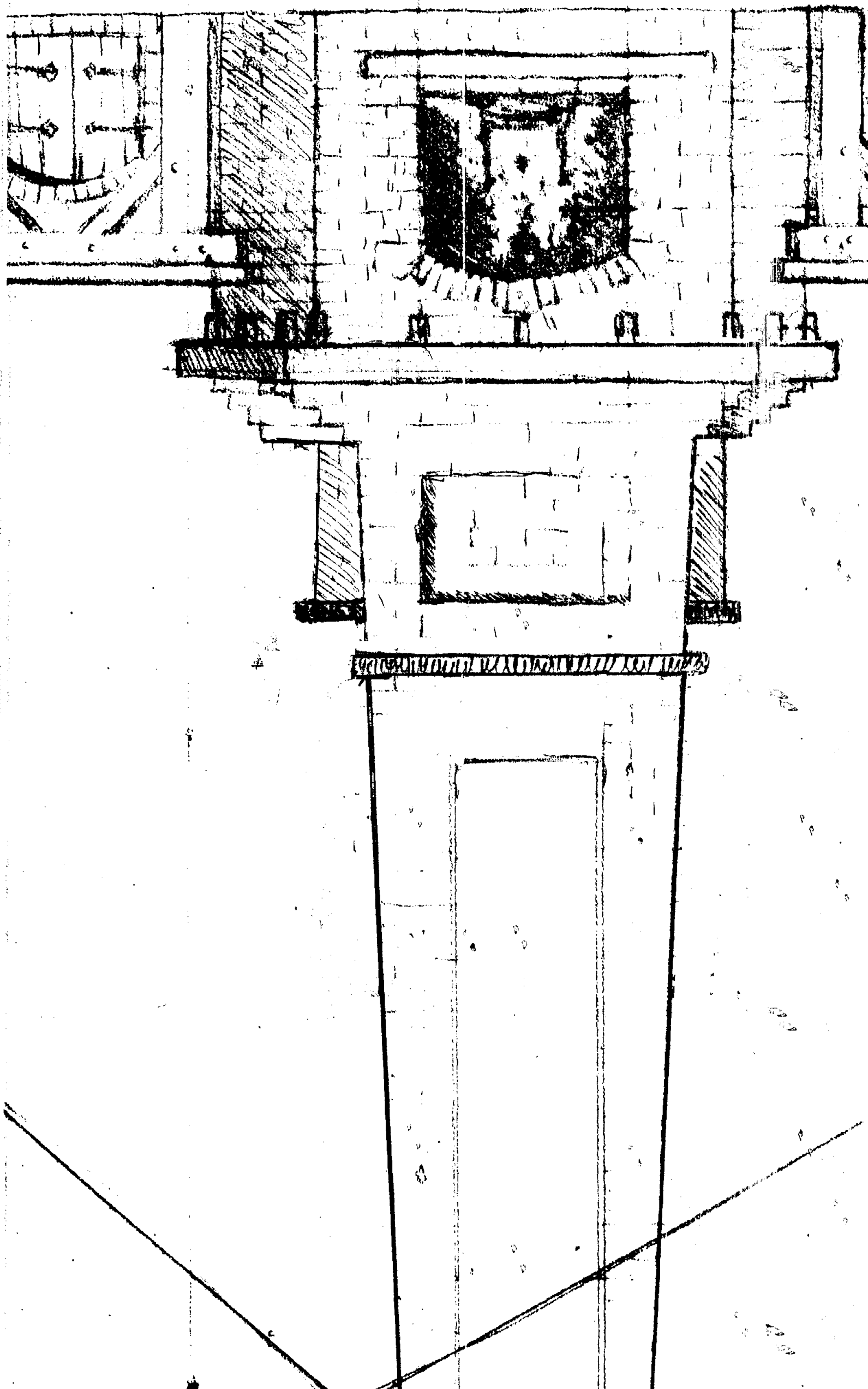
TILE

DW

Ref.

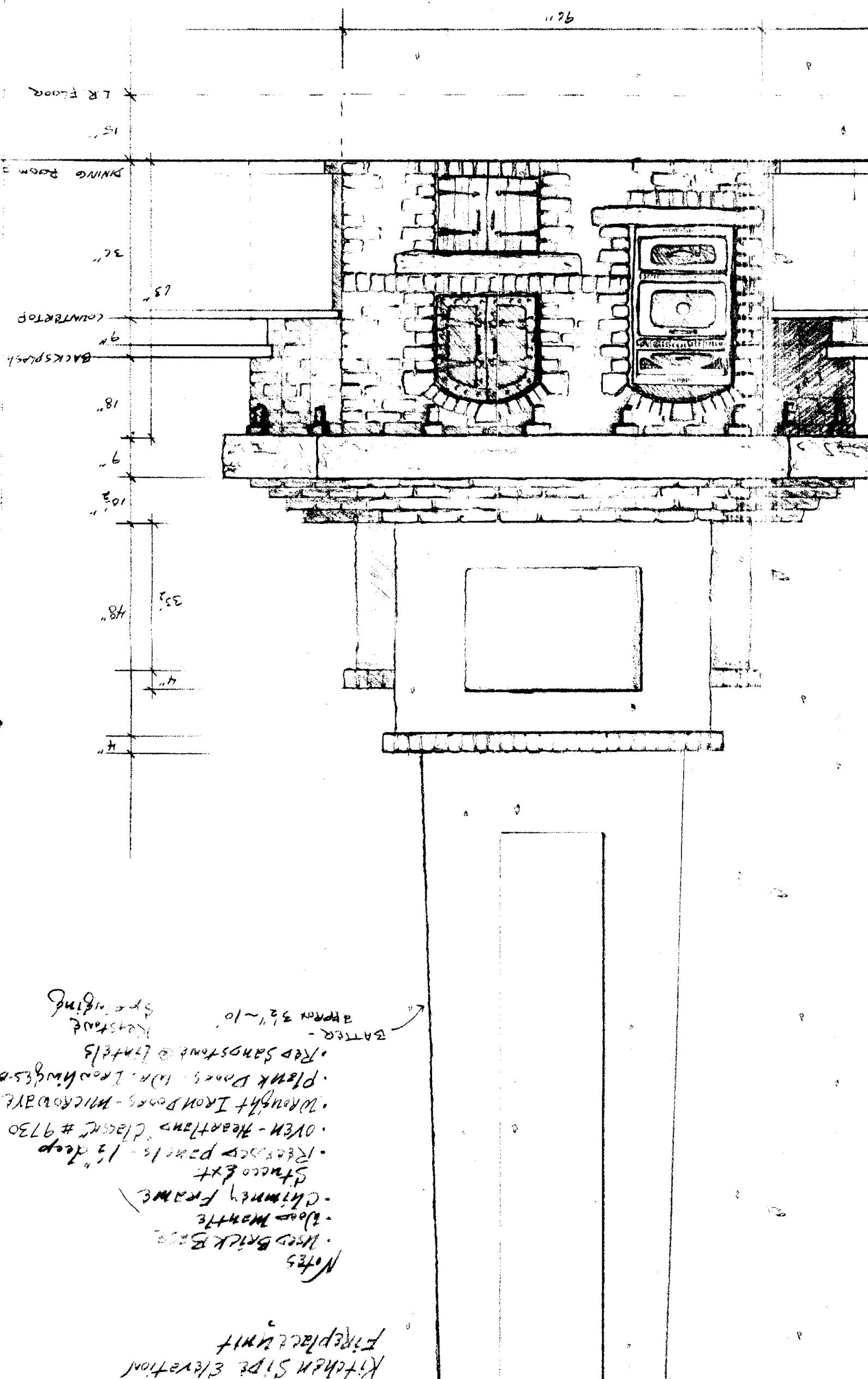
BUTCHER
BLOCK

UP 2R
AT 5R



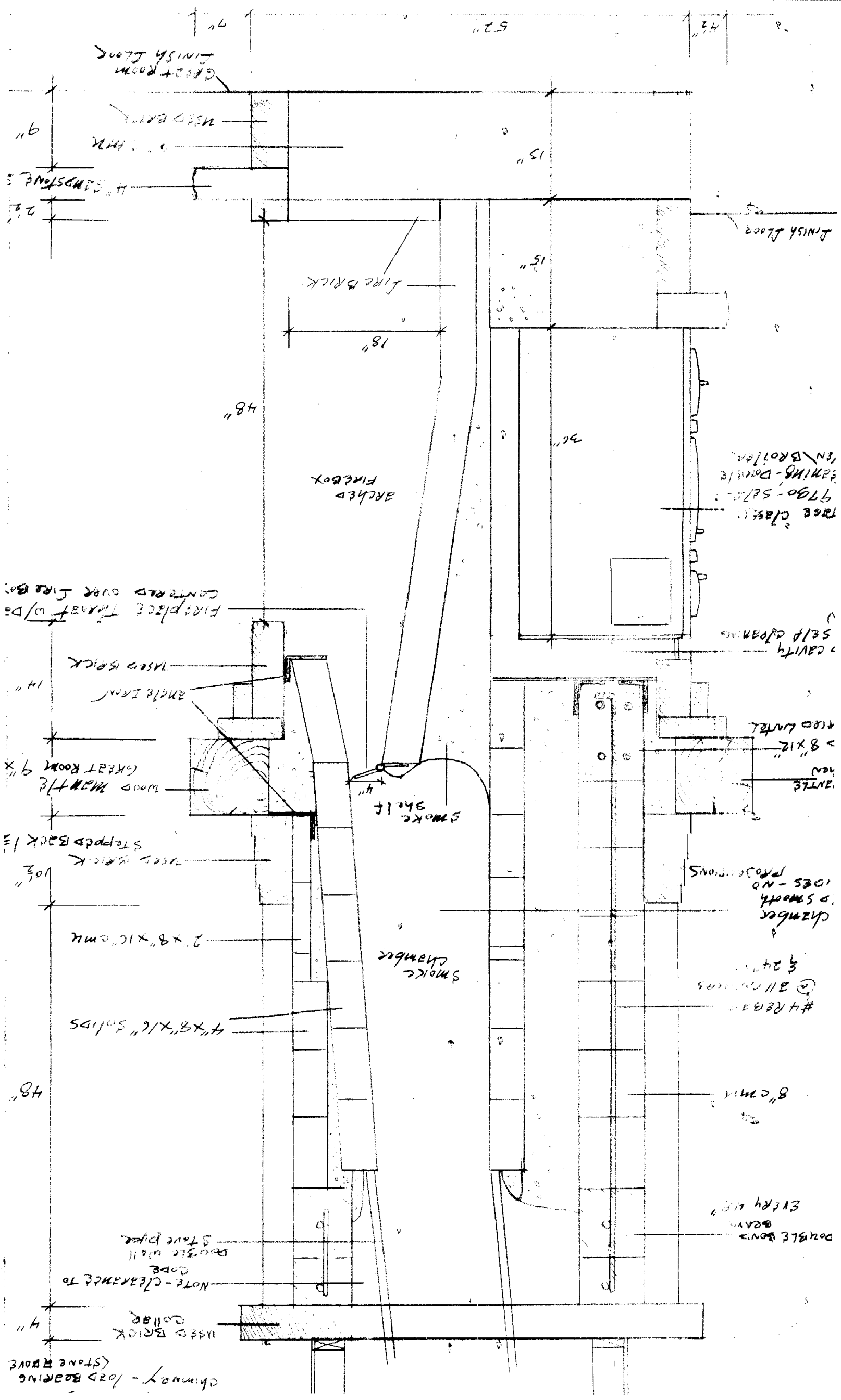
Note - Consult Installation Manual
 To determine R.O. - All Appliances
 22 1/2" x 37 1/2" x 24"

Scale 1" = 1'



Kitchen Side Elevation
 Fireplace Unit

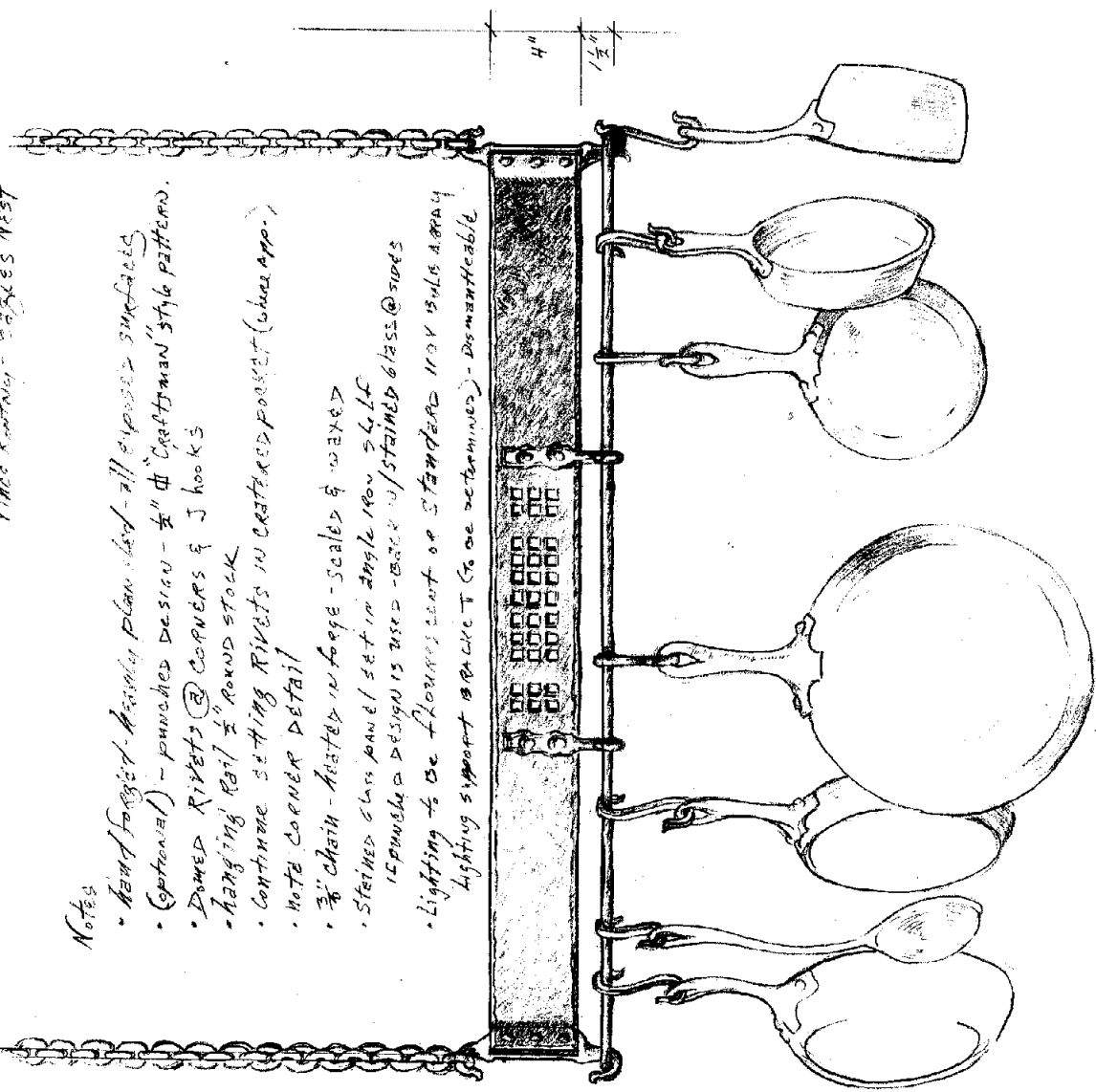
- Notes
- Used Brick Base
 - Wood Mantle
 - Chimney Frame
 - Stucco Ext
 - recessed panels - 1 1/2" deep
 - Oven - Heartland "Classic" # 9730
 - Wrought Iron Doors - Microaire
 - Plank Doors - W.R. Iron Works - M
 - Red Sandstone @ Mantels
 - Kestaud
 - Spraying
 - BATTER - APPROX 3 1/2" ~ 10"



Kitchen
Wrought Iron Pot Rack
Linc
Vince Rantony - Sables Nest

Notes

- Hand Forged - Anvil Plan Used - all exposed surfaces (optional) - punched design - 1/2" dia Craftman style patterns.
- Domed Rivets @ corners & J hooks
- Hanging Rail 1/2" Round Stock
- Contain setting rivets in crated pocket (blue app.)
- Note corner detail
- 3/8" chain - Anvils in forge - scales & waxed
- Stained glass panel set in angle iron shelf
- Punched design is used - back w/ stained glass @ sides
- Lighting to be Fluorescent or standard (not bulbs array lighting support bracket (to be determined) - dismantlable



Scale 1" = 6"

